



Price
£230,000

Leasehold

2x  2x  1x 

**Charlton Green, Dover,
Kent, CT16**

OVER 60?

Secure this property
for up to **59% less!**

Wards
Helping you move forwards



Main features

- Purpose built top floor apartment
- En-suite to bedroom 1
- Allocated parking space
- Close to town making it easy to get to the shops as well as amenities like the gym
- Good access to A2/M2 & M20 as well as close to Dover Priory railway station with its fast links to London

Accommodation

TOP FLOOR

Entrance Hallway

Bedroom 1 : 15'2 x 12'4 (4.63m x 3.76m)

En-Suite Shower Room

Bathroom : 10'3 x 6'0 (3.13m x 1.83m)

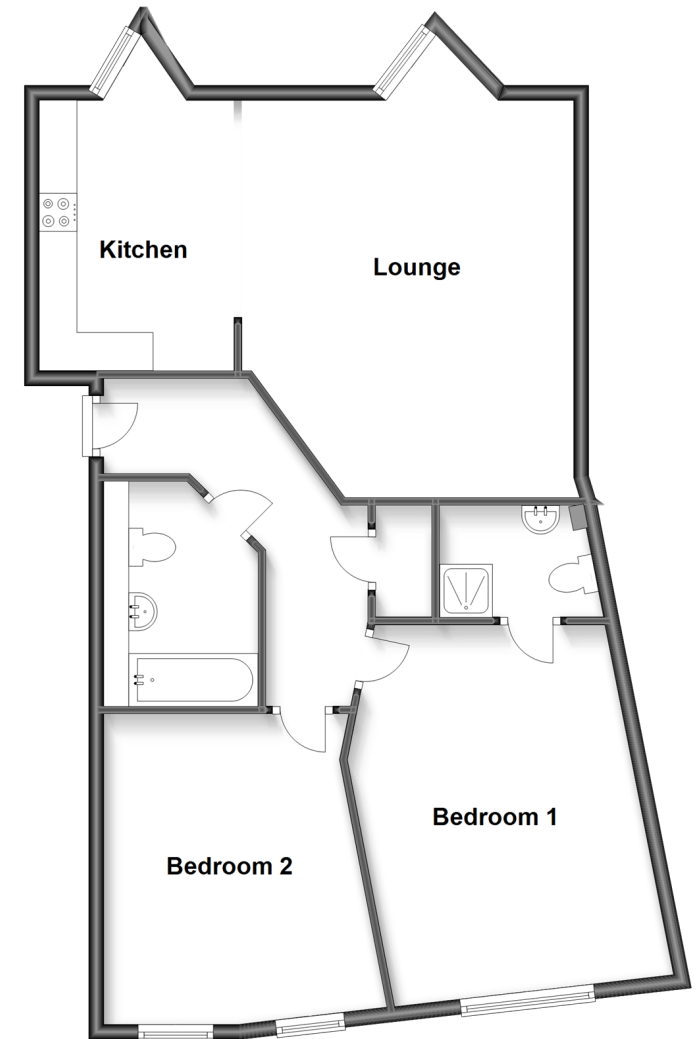
Bedroom 2: 12'3 x 11'3 (3.74m x 3.43m)

Kitchen/Lounge: 23'5 x 19'0 (7.14m x 5.80m)

OUTSIDE

Allocated Parking

Top Floor
Approx. 83.5 sq. metres (898.5 sq. feet)



Call Dover - 01304 214876 ■ wardsofkent.co.uk

- Legal advice should be taken to verify fixtures/fittings, planning, alterations and/or lease details
- Appliances & services are untested, dimensions are approximate and floor plans are not to scale
- Through a Homewise Home For Life Plan people aged 60+ can secure this property for up to 59% less, by purchasing a Lifetime Lease.



10735010/20230223/TE/OV