



Guide Price
£325,000

Freehold

3x  1x  2x 

**Downside Road,
Whitfield, Dover, Kent,
CT16**

OVER 60?

Secure this property
for up to **59% less!**

Wards
Helping you move forwards



Main features

- Ideal family home, turn key condition
- Garage & off-road parking
- Recently installed beautiful kitchen
- Sought after village of Whitfield with excellent transport links
- Whitfield has a school, shops, village hall & new leisure centre, making this an ideal place to live

Accommodation

GROUND FLOOR

Entrance Porch
Entrance Hallway
Lounge : 18'6 x 14'6 (5.64m x 4.42m)
Conservatory : 14'1 x 8'1 (4.30m x 2.47m)
Kitchen : 12'9 x 9'8 (3.89m x 2.95m)

FIRST FLOOR

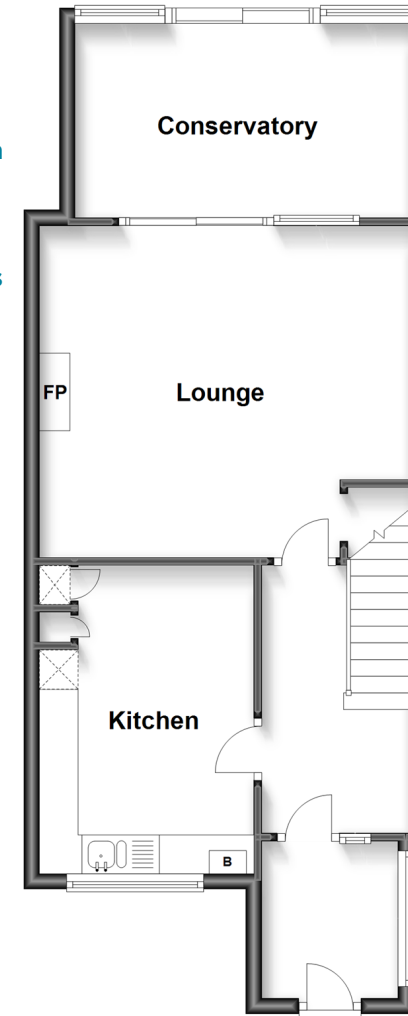
Landing
Bedroom 3 : 7'9 x 7'2 (2.36m x 2.19m)
Bedroom 2 : 11'6 x 8'2 (3.51m x 2.49m)
Bedroom 1 : 13'2 x 9'1 (4.02m x 2.77m)
Shower Room : 8'2 x 6'2 (2.49m x 1.88m)

OUTSIDE

Garage
Off Road Parking
Front Garden
Rear Garden

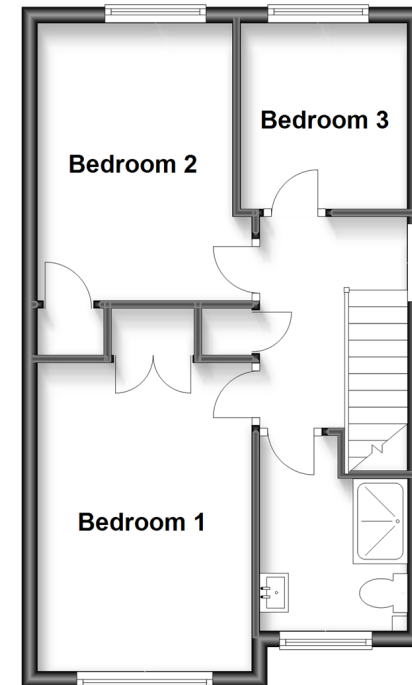
Ground Floor

Approx. 53.9 sq. metres (580.2 sq. feet)



First Floor

Approx. 38.9 sq. metres (418.4 sq. feet)



Call Dover - 01304 214876 ■ wardsof Kent.co.uk

- Legal advice should be taken to verify fixtures/fittings, planning, alterations and/or lease details
- Appliances & services are untested, dimensions are approximate and floor plans are not to scale
- Through a Homewise Home For Life Plan people aged 60+ can secure this property for up to 59% less, by purchasing a Lifetime Lease.



10735025/20230603/TE/OV