



**OVER 60?**

Secure this property  
for up to **59% less!**

**Guide Price**

**£275,000**

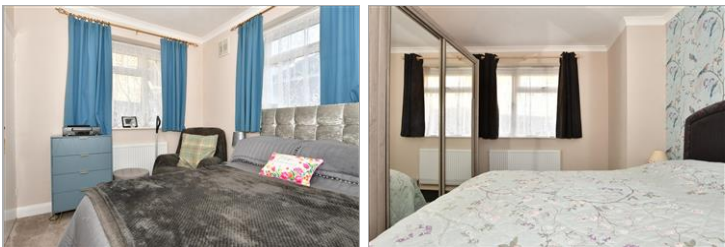
**Freehold**

2x  1x  2x 

**Queens Avenue, Dover,  
Kent, CT17**

*Wards*  
Helping you move forwards





## Main features

- Beautifully presented detached bungalow
- Sought after location of Elms Vale
- Newly built steps to the bungalow
- Stunning elevated views across Elms Vale & Maxton from tiered rear garden
- Close to schools & shops as well as beautiful walks over hilltop trails

## Accommodation

### GROUND FLOOR

#### Entrance Hallway

Lounge : 15'3 x 10'2 (4.65m x 3.10m)

Kitchen : 9'10 x 8'4 (3.00m x 2.54m)

Shower Room : 6'4 x 5'3 (1.93m x 1.60m)

Bedroom 2 : 10'7 x 8'4 (3.23m x 2.54m)

Bedroom 1 : 14'2 x 10'1 (4.32m x 3.08m)

Conservatory : 11'2 x 6'1 (3.41m x 1.86m)

### OUTSIDE

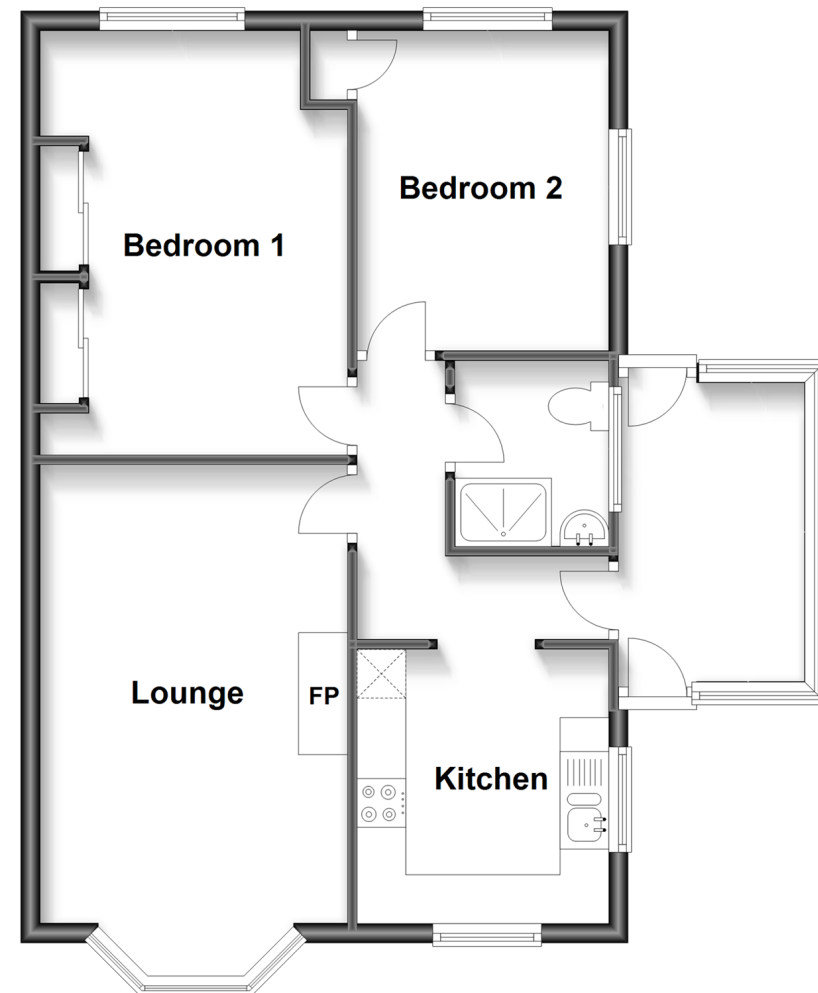
Tiered Rear Garden

Summer House

Shed

## Ground Floor

Approx. 59.8 sq. metres (643.5 sq. feet)



**Call Dover - 01304 214876 ■ [wardsofKent.co.uk](http://wardsofKent.co.uk)**

- Legal advice should be taken to verify fixtures/fittings, planning, alterations and/or lease details
- Appliances & services are untested, dimensions are approximate and floor plans are not to scale
- Through a Homewise Home For Life Plan people aged 60+ can secure this property for up to 59% less, by purchasing a Lifetime Lease.



10735026/20230512/SB/OV