



Price
£200,000

Freehold

2x  1x  1x 

**Greengates, Beauxfield,
Whitfield, Dover, Kent,
CT16**

OVER 60?

Secure this property
for up to **59% less!**

Wards
Helping you move forwards



Main features

- Ground floor garden flat
- Freehold flat – cash buyers only
- With off street parking for 3 to 4 vehicles & a garage
- Positioned on a private drive off a quiet cul-de-sac
- Whitfield village benefits from a local post office as well a good transport links

Accommodation

GROUND FLOOR

Conservatory

Hallway

Lounge : 19'7 x 12'9 (5.97m x 3.89m)

Bathroom : 6'9 x 5'3 (2.06m x 1.60m)

Bedroom 1 : 12'1 x 8'1 (3.69m x 2.47m)

Bedroom 2 : 9'9 x 8'7 (2.97m x 2.62m)

Kitchen: 13'3 x 10'7 (4.04m x 3.23m)

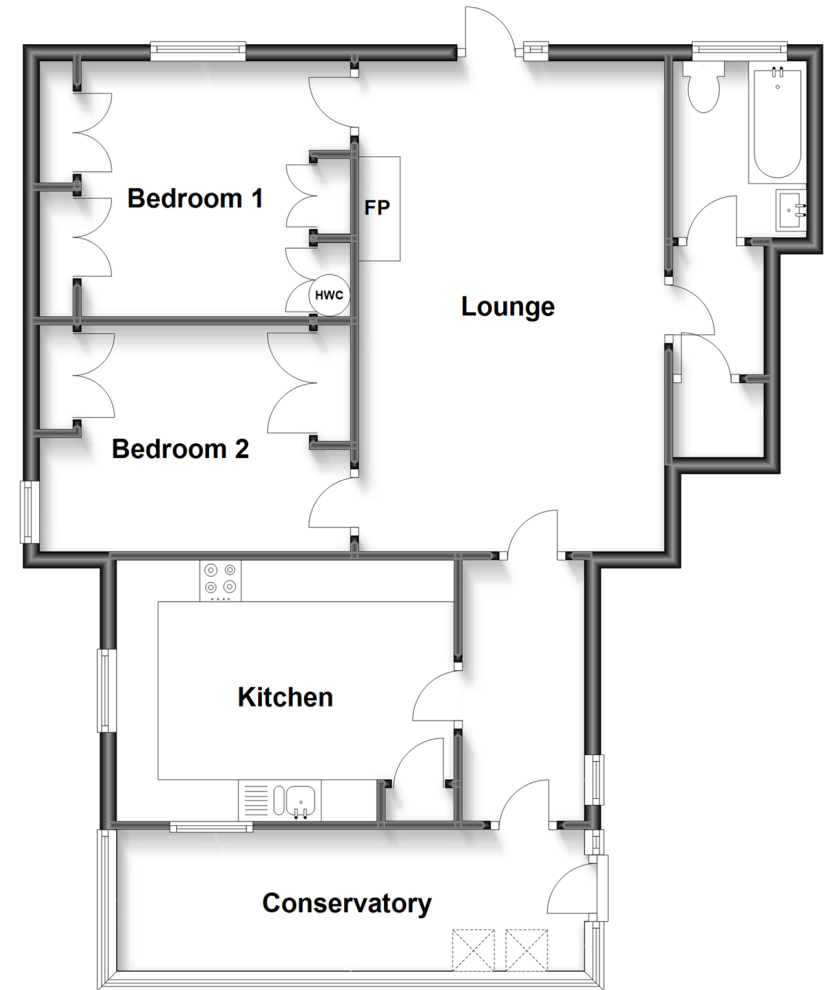
OUTSIDE

Rear Garden

Garage & Off Road Parking

Ground Floor

Approx. 79.6 sq. metres (856.7 sq. feet)



Call Dover - 01304 214876 ■ wardsofkent.co.uk

- Legal advice should be taken to verify fixtures/fittings, planning, alterations and/or lease details
- Appliances & services are untested, dimensions are approximate and floor plans are not to scale
- Through a Homewise Home For Life Plan people aged 60+ can secure this property for up to 59% less, by purchasing a Lifetime Lease.



10735050/20230511/TE/OV