



**Price**  
**£400,000**

**Freehold**

3x  2x  1x 

**Long Hill Lane, East  
Langdon, Dover, Kent,  
CT15**

**OVER 60?**

Secure this property  
for up to **59% less!**

*Wards*  
Helping you move forwards



## Main features

- High spec large family house
- Quiet village cul-de-sac location
- Heating is via an air source heat pump.
- En-suite to bedroom 1, family bathroom as well as a downstairs cloakroom
- Off street parking for 2 cars as well as low maintenance rear garden

## Accommodation

### GROUND FLOOR

Entrance Hallway  
Kitchen/Breakfast Room  
Downstairs Cloakroom  
Study : 9'9 x 7'9 (2.97m x 2.36m)  
Lounge : 15'3 x 10'4 (4.65m x 3.15m)

### FIRST FLOOR

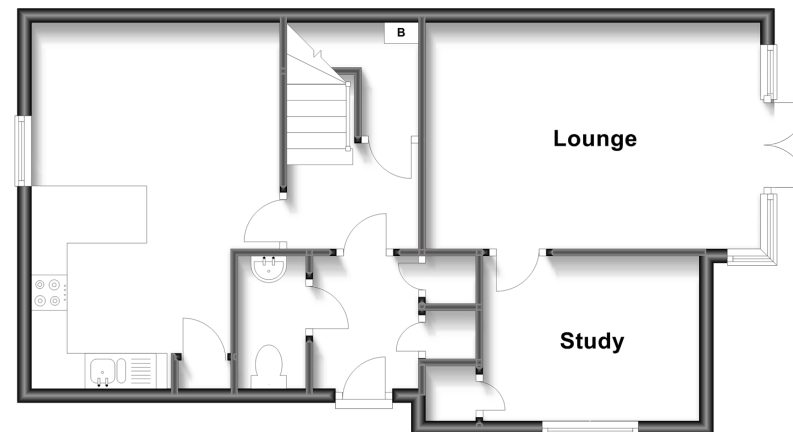
Landing  
Bedroom 1: 12'3 x 10'1 (3.74m x 3.08m)  
En-Suite Shower Room : 10'3 x 5'3 (3.13m x 1.60m)  
Bedroom 3: 11'6 x 10'9 (3.51m x 3.28m)  
Bedroom 2: 12'3 x 7'4 (3.74m x 2.24m)  
Bathroom : 7'8 x 5'6 (2.34m x 1.68m)

### OUTSIDE

Front Garden  
Rear Garden  
Shed  
Off Road Parking

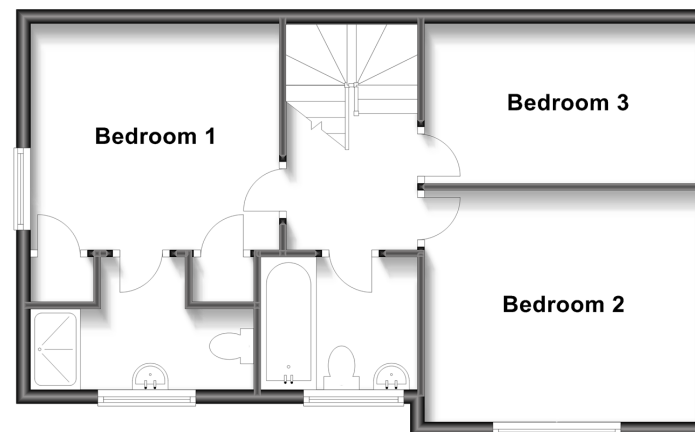
### Ground Floor

Approx. 53.2 sq. metres (572.9 sq. feet)



### First Floor

Approx. 50.5 sq. metres (543.3 sq. feet)



**Call Dover - 01304 214876 ■ [wardsof Kent.co.uk](http://wardsof Kent.co.uk)**

- Legal advice should be taken to verify fixtures/fittings, planning, alterations and/or lease details
- Appliances & services are untested, dimensions are approximate and floor plans are not to scale
- Through a Homewise Home For Life Plan people aged 60+ can secure this property for up to 59% less, by purchasing a Lifetime Lease.



10735074/20230425/SB/OV