



**Price**  
**£120,000**

**Leasehold**

1x  1x  1x 

**Second floor, London  
Road, River, Kent, CT17**

**OVER 60?**

Secure this property  
for up to **59% less!**

*Wards*  
Helping you move forwards





## Main features

- Large second floor flat over two floors
- Central location on a bus route and close to schools and shops
- Perfect first time buy or buy to let
- Fantastic access to the A2/M2, A20/M20
- Close to Dover Priory railway station

## Accommodation

### FIRST FLOOR

Entrance Hallway

Lounge : 14'8 x 13'8 (4.47m x 4.17m)

Kitchen: 9'1 x 8'7 (2.77m x 2.62m)

Bathroom

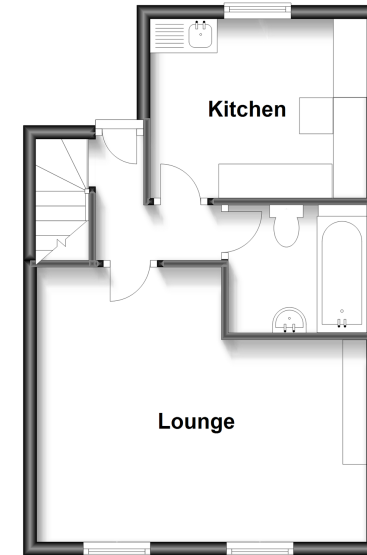
### SECOND FLOOR

Landing

Bedroom : 9'0 x 8'2 (2.75m x 2.49m)

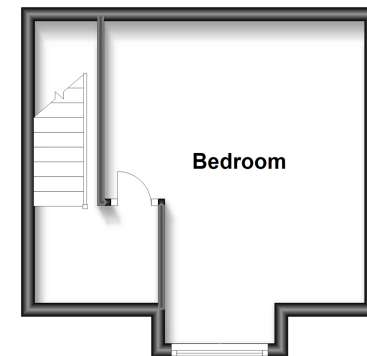
### First Floor

Approx. 34.9 sq. metres (375.5 sq. feet)



### Second Floor

Approx. 21.4 sq. metres (230.3 sq. feet)



**Call Dover - 01304 214876 ■ [wardsofkent.co.uk](http://wardsofkent.co.uk)**

- Legal advice should be taken to verify fixtures/fittings, planning, alterations and/or lease details
- Appliances & services are untested, dimensions are approximate and floor plans are not to scale
- Through a Homewise Home For Life Plan people aged 60+ can secure this property for up to 59% less, by purchasing a Lifetime Lease.



10735076/20230323/GM/AF