

OVER 60?

Secure this property
for up to **59% less!**



Guide Price
£360,000
Freehold

3x  1x  2x 

Sandwich Road, Whitfield, Dover, Kent,
CT15

Wards
Helping you move forwards



Main features

- Wonderful chalet bungalow set in a desirable village location
- Off road parking & garage, ideal for when the guests descend
- Great access to Canterbury & Dover
- Ideal property for a growing family
- Good size enclosed rear garden, ideal for children or pets

Accommodation

GROUND FLOOR

Entrance Porch : 11'4 x 6'2 (3.46m x 1.88m)
 Entrance Hallway
 Dining Room : 12'7 x 10'8 (3.84m x 3.25m)
 Lounge : 15'1 x 10'8 (4.60m x 3.25m)
 Bedroom 3 (Used as a study): 9'3 x 8'10 (2.82m x 2.69m)
 Bathroom : 6'1 x 5'7 (1.86m x 1.70m)
 Kitchen : 8'5 x 8'3 (2.57m x 2.52m)

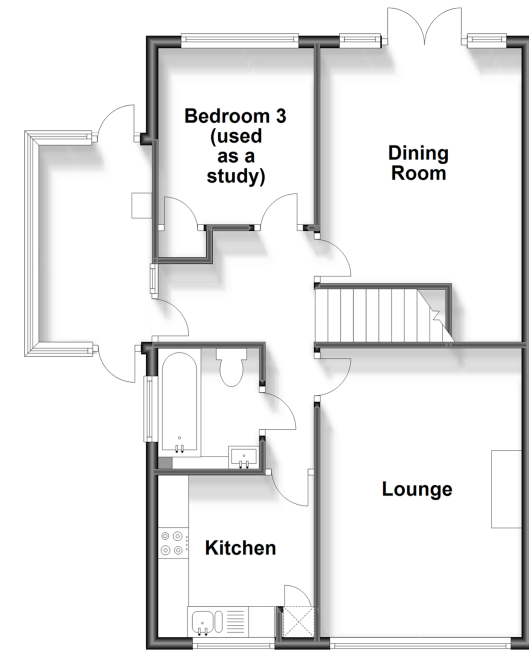
FIRST FLOOR

Landing
 Bedroom 1 : 19'7 x 13'5 (5.97m x 4.09m)
 Bedroom 2 : 16'0 x 11'0 (4.88m x 3.36m)

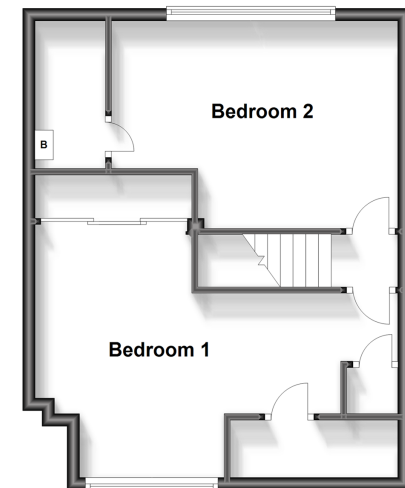
OUTSIDE

Front & Rear Gardens
 Garage & Off Road Parking
 Home Office : 15'3 x 9'2 (4.65m x 2.80m)

Ground Floor
 Approx. 62.8 sq. metres (676.3 sq. feet)



First Floor
 Approx. 43.0 sq. metres (462.7 sq. feet)



Call Dover - 01304 214876 ■ wardsofkent.co.uk

- Legal advice should be taken to verify fixtures/fittings, planning, alterations and/or lease details
- Appliances & services are untested, dimensions are approximate and floor plans are not to scale
- Through a Homewise Home For Life Plan people aged 60+ can secure this property for up to 59% less, by purchasing a Lifetime Lease.