



**Price**

**£300,000**

**Leasehold**

2x  1x  1x 

**Plot 1, Castle Avenue,  
Dover, Kent, CT16**

*Wards*  
Helping you move forwards



## Main features

- Beautiful spacious new build apartment
- Allocated parking
- Fully fitted kitchen with quartz work tops
- Integrated Lamona appliances
- White bathroom suite
- Advantage 10-year build warranty

## Accommodation

### LOWER GROUND FLOOR

Entrance Hallway

Kitchen/Living/Diner: 16'4 (4.98m) narrowing to 11'9 (3.58m) x 14'8 (4.47m)

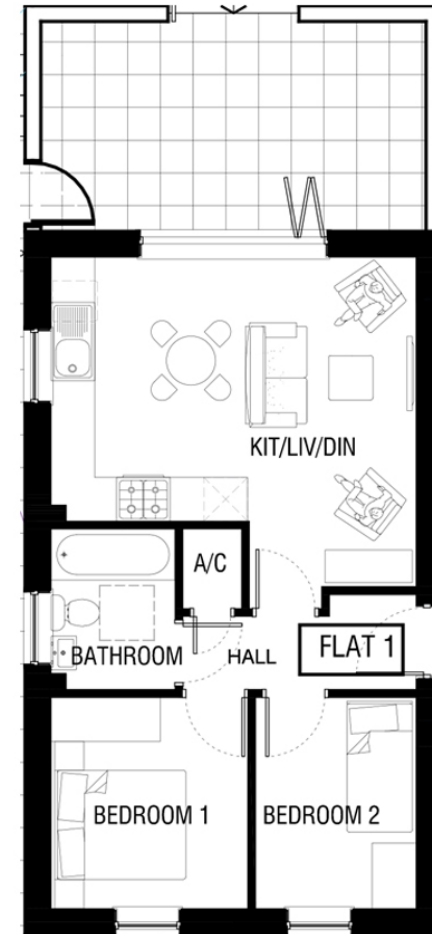
Bedroom 1 : 9'5 x 8'9 (2.87m x 2.67m)

Bedroom 2: 9'5 x 7'2 (2.87m x 2.19m)

Bathroom: 7'2 x 5'6 (2.19m x 1.68m)

### OUTSIDE

Allocated Parking



Flat 1 - Lower Ground Floor

**Call Dover - 01304 214876 ■ [wardsofkent.co.uk](http://wardsofkent.co.uk)**

- If buying to let, the energy rating will need to be improved to at least 'E' rating before you can let the property
- Legal advice should be taken to verify fixtures/fittings, planning, alterations and/or lease details
- Appliances & services are untested, dimensions are approximate and floor plans are not to scale



10735102/20230327/TE/GM