



OVER 60?

Secure this property
for up to **59% less!**

Price

£300,000

Leasehold

2x  1x  1x 

**Plot 2, Castle Avenue,
Dover, Kent, CT16**

Wards
Helping you move forwards



Main features

- Beautiful spacious lower ground floor new build apartment
- Allocated parking & garden
- Fully fitted kitchen with quartz work tops
- Integrated Lamona appliances
- White bathroom suite
- Advantage 10-year build warranty

Accommodation

LOWER GROUND FLOOR

Entrance Hallway

Kitchen/Living/Diner : 16'4 (4.98m)
narrowing to 11'9 at narrowest point
(3.58m) x 14'8 (4.47m)

Bedroom 1 : 9'5 x 8'9 (2.87m x 2.67m)

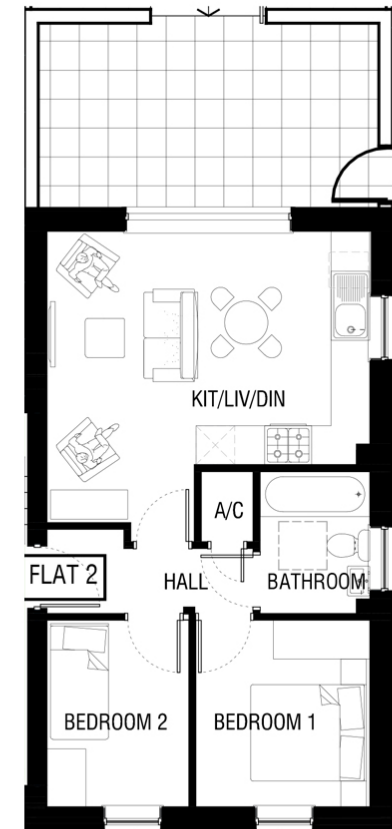
Bedroom 2 : 9'5 x 7'2 (2.87m x 2.19m)

Bathroom : 7'2 x 5'6 (2.19m x 1.68m)

OUTSIDE

Allocated Parking Space

Rear Garden



Flat 2 - Lower Ground Floor

Call Dover - 01304 214876 ■ wardsofkent.co.uk

- If buying to let, the energy rating will need to be improved to at least 'E' rating before you can let the property
- Legal advice should be taken to verify fixtures/fittings, planning, alterations and/or lease details
- Appliances & services are untested, dimensions are approximate and floor plans are not to scale
- Through a Homewise Home For Life Plan people aged 60+ can secure this property for up to 59% less, by purchasing a Lifetime Lease.



10735105/20230329/TE/GM