



OVER 60?

Secure this property
for up to **59% less!**

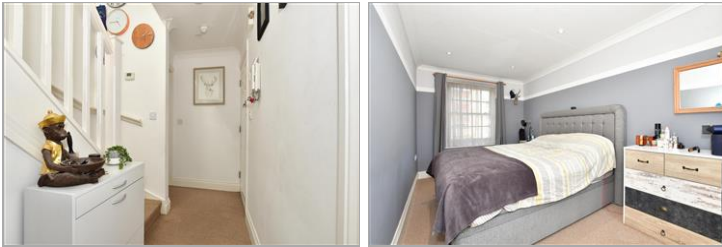
Guide Price
£150,000

Freehold

2x  1x  1x 

**Queens Courtyard,
Dover, Kent, CT17**

Wards
Helping you move forwards



Main features

- A very well proportioned duplex apartment
- Found in a gated secure central location
- Secure allocated parking space
- Positioned in the heart of Dover town, leave the car at home & walk to the shops or seafront
- Ideal first home

Accommodation

SECOND FLOOR

Entrance Hallway

Bedroom 2 : 12'3 x 7'9 (3.74m x 2.36m)

Bedroom 1 : 19'3 x 8'8 (5.87m x 2.64m)

Bathroom: 6'4 x 5'8 (1.93m x 1.73m)

THIRD FLOOR

Landing

Lounge : 13'4 x 12'6 (4.07m x 3.81m)

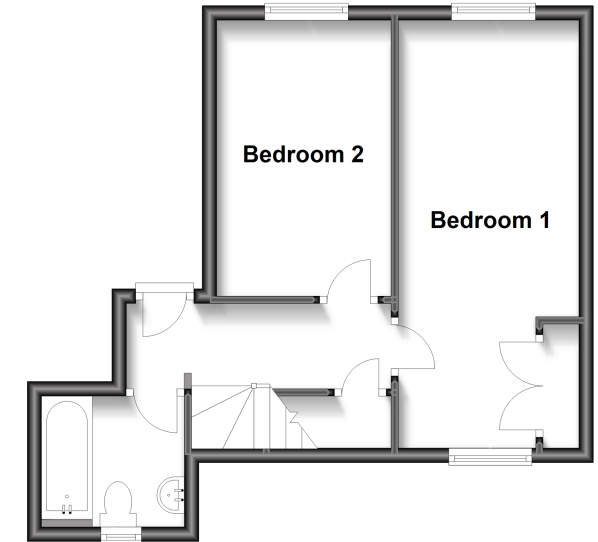
Kitchen : 12'9 x 6'7 (3.89m x 2.01m)

OUTSIDE

Allocated Parking

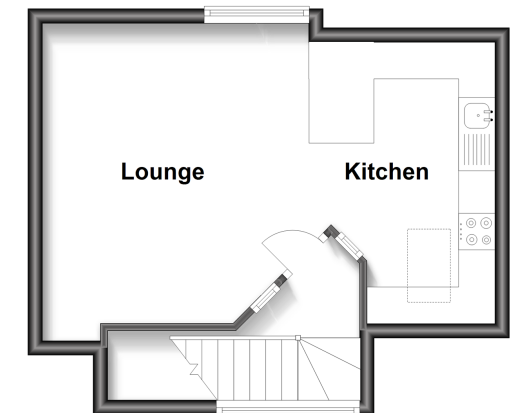
Second Floor

Approx. 34.6 sq. metres (372.4 sq. feet)



Third Floor

Approx. 28.8 sq. metres (309.7 sq. feet)



Call Dover - 01304 214876 ■ wardsofkent.co.uk

- Legal advice should be taken to verify fixtures/fittings, planning, alterations and/or lease details
- Appliances & services are untested, dimensions are approximate and floor plans are not to scale
- Through a Homewise Home For Life Plan people aged 60+ can secure this property for up to 59% less, by purchasing a Lifetime Lease.



10735109/20231123/GM/OV