



OVER 60?

Secure this property
for up to **59% less!**

Price

£300,000

Leasehold

2x  1x  1x 

**The Gateway, Dover,
Kent, CT16**

Wards
Helping you move forwards



Main features

- Purpose built top floor apartment
- Stunning triple aspect views over The English Channel from the balconies
- Residential parking
- No onward chain complications
- Easy access to A2 & A245 as well as Dover Port with access to Europe & beyond

Accommodation

TOP FLOOR

Entrance Hallway

Lounge : 19'2 x 12'7 (5.85m x 3.84m)

Balcony

Kitchen : 11'8 x 9'4 (3.56m x 2.85m)

Balcony

Bedroom 1 : 13'0 x 12'6 (3.97m x 3.81m)

Bedroom 2 : 11'3 x 9'1 (3.43m x 2.77m)

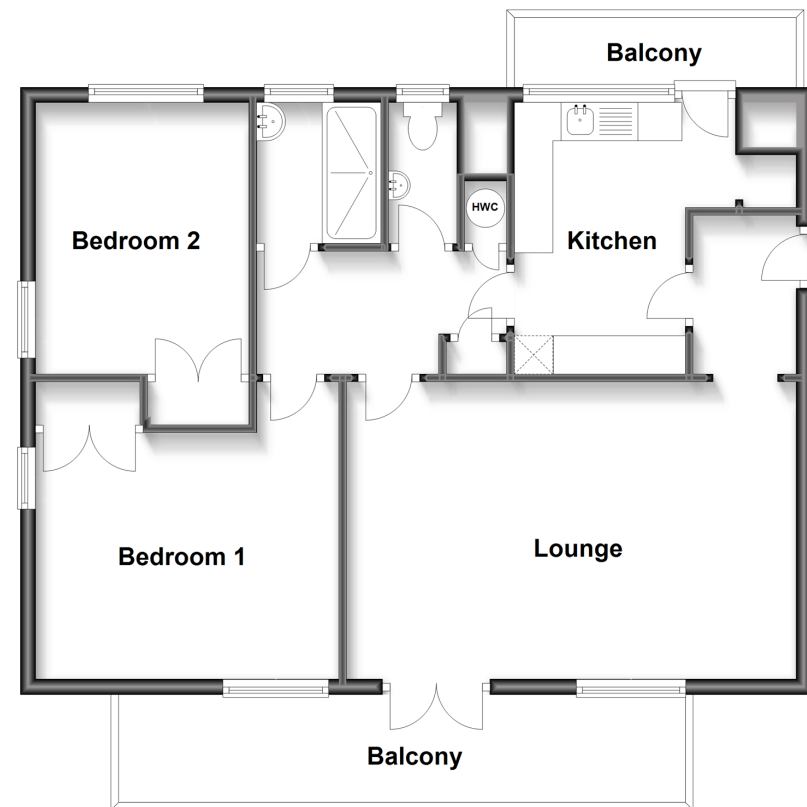
Shower Room: 5'6 x 5'3 (1.68m x 1.60m)

Separate Cloakroom

OUTSIDE

Communal Gardens

Top Floor
Approx. 74.3 sq. metres (799.2 sq. feet)



Call Dover - 01304 214876 ■ wardsofkent.co.uk

- Legal advice should be taken to verify fixtures/fittings, planning, alterations and/or lease details
- Appliances & services are untested, dimensions are approximate and floor plans are not to scale
- Through a Homewise Home For Life Plan people aged 60+ can secure this property for up to 59% less, by purchasing a Lifetime Lease.



10735110/20240507/TE/OV