



Guide Price
£500,000

Freehold

4x  1x  3x 

Greenwich Lane, Ewell
Minnis, Dover, Kent,
CT15

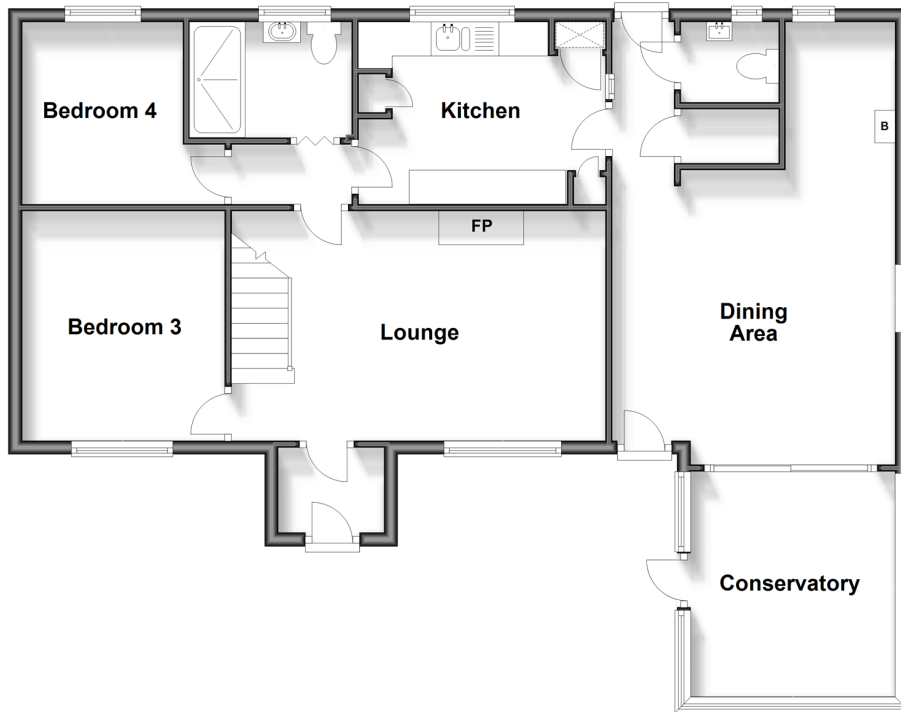
OVER 60?

Secure this property
for up to **59% less!**

Wards
Helping you move forwards

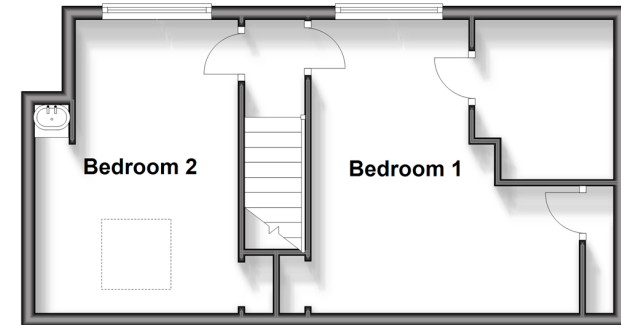
Ground Floor

Approx. 92.9 sq. metres (1000.1 sq. feet)



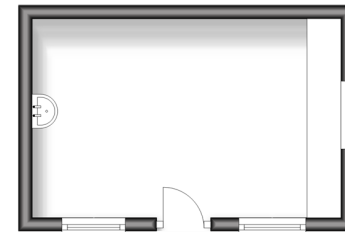
First Floor

Approx. 36.2 sq. metres (389.1 sq. feet)



Outbuilding

Approx. 13.4 sq. metres (143.7 sq. feet)



Accommodation

GROUND FLOOR

Entrance Porch
Lounge : 18'2 x 11'10 (5.54m x 3.61m)
Bedroom 3 : 11'11 x 9'11 (3.63m x 3.02m)
Bedroom 4 : 9'11 x 8'11 (3.02m x 2.72m)
Shower Room
Kitchen : 11'11 x 8'11 (3.63m x 2.72m)
Downstairs Cloakroom
Dining Area: 19'9 x 13'8 (6.02m x 4.17m)
Conservatory : 10'11 x 9'8 (3.33m x 2.95m)

FIRST FLOOR

Landing
Bedroom 1 : 14'3 x 11'11 (4.35m x 3.63m)
Bedroom 2 : 14'3 x 10'0 (4.35m x 3.05m)

OUTBUILDING

Outbuilding

OUTSIDE

Front Garden
Rear Garden
Off Road Parking



Main features

- Large family house set in a desirable location
- Ample off-road parking, ideal for when the guest descend
- Large private rear garden, perfect during the summer months
- Beautifully presented throughout
- Great access to both Folkestone and Dover along the Alkham Valley Road



Nearest Schools

Primary Schools: Lydden Primary 1.2 miles, Temple Ewell C of E Primary 1.7 miles, River Primary 1.9 miles
Secondary Schools: The Old School 2.5 miles, Harbour School 2.6 miles, Astor College for the Arts 2.9 miles.



Transport Information

Train Stations: Kearsney 1.8 miles, Shepherdswell 2.8 miles, Dover Priory 3.6 miles



Address

Greenwich Lane, Ewell Minnis, Dover, Kent, CT15



Directions

For directions to this property please contact us.



Wards
Helping you move forwards

Call Dover Branch 01304 214876 ■ wardsofkent.co.uk



■ Legal advice should be taken to verify fixtures/fittings, planning, alterations and/or lease details ■ Appliances & services are untested, dimensions are approximate and floor plans are not to scale
■ Through a Homewise Home For Life Plan people aged 60+ can secure this property for up to 59% less, by purchasing a Lifetime Lease.



10735120/20240517/SB/GM