



Guide Price
£170,000

Leasehold

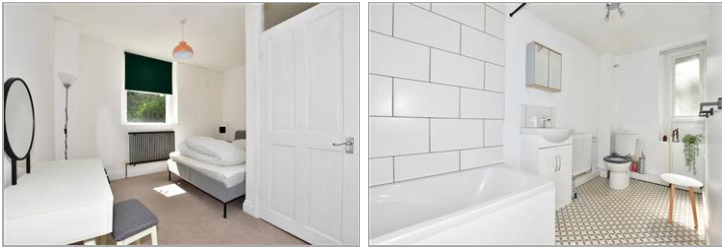
2x  1x  1x 

**High Street, Dover,
Kent, CT16**

OVER 60?

Secure this property
for up to **59% less!**

Wards
Helping you move forwards



Main features

- Beautifully presented lower ground floor maisonette
- Ideal first time buy or buy to let
- No onward chain complications
- Easy access to the town centre, shops, local schools & amenities
- Ideal for commuting with Dover Priory railway station as well as easy access to road links

Accommodation

LOWER GROUND FLOOR

Lounge : 12'9 x 12'1 (3.89m x 3.69m)

Kitchen : 9'4 x 6'1 (2.85m x 1.86m)

Bathroom

UPPER GROUND FLOOR

Bedroom 1 : 12'9 x 8'3 (3.89m x 2.52m)

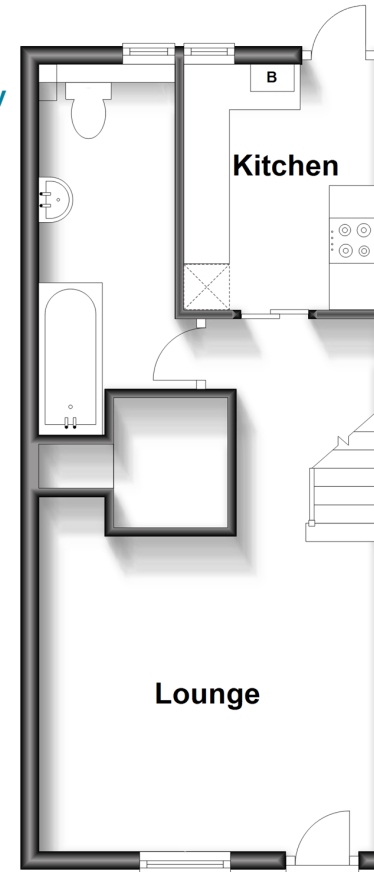
Bedroom 2 : 12'9 x 8'3 (3.89m x 2.52m)

OUTSIDE

Rear Garden

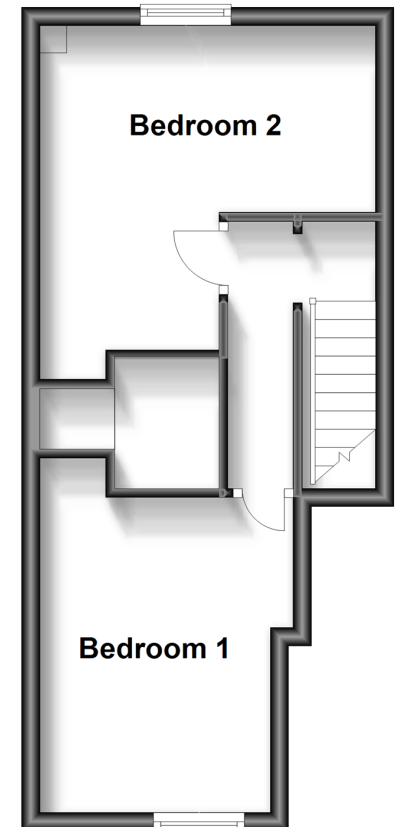
Lower Ground Floor

Approx. 32.1 sq. metres (345.9 sq. feet)



Upper Ground Floor

Approx. 28.4 sq. metres (305.5 sq. feet)



Call Dover - 01304 214876 ■ wardsofkent.co.uk

- Legal advice should be taken to verify fixtures/fittings, planning, alterations and/or lease details
- Appliances & services are untested, dimensions are approximate and floor plans are not to scale
- Through a Homewise Home For Life Plan people aged 60+ can secure this property for up to 59% less, by purchasing a Lifetime Lease.



10735123/20230614/OV/OV