



Price
£375,000

Freehold

2x  2x  2x 

**Sun Valley Way,
Eythorne, Dover, Kent,
CT15**

OVER 60?

Secure this property
for up to **59% less!**

Wards
Helping you move forwards



Main features

- Quiet cul-de-sac in sought after location
- Sun trap rear garden, ideal for relaxing
- Stunning home with garage & off road parking
- Village of Eythorne, with local pub and shop
- Easy access to A256 & A2/M2

Accommodation

GROUND FLOOR

Entrance Hallway

Lounge : 16'4 x 9'3 (4.98m x 2.82m)

Kitchen : 14'2 x 8'2 (4.32m x 2.49m)

Conservatory To The Rear: 12'3 x 8'7 (3.74m x 2.62m)

Bedroom 1 : 11'1 x 10'5 (3.38m x 3.18m)

En-Suite Shower Room : 5'5 x 5'3 (1.65m x 1.60m)

Bathroom : 6'2 x 6'2 (1.88m x 1.88m)

Bedroom 2 : 11'1 x 8'8 (3.38m x 2.64m)

OUTSIDE

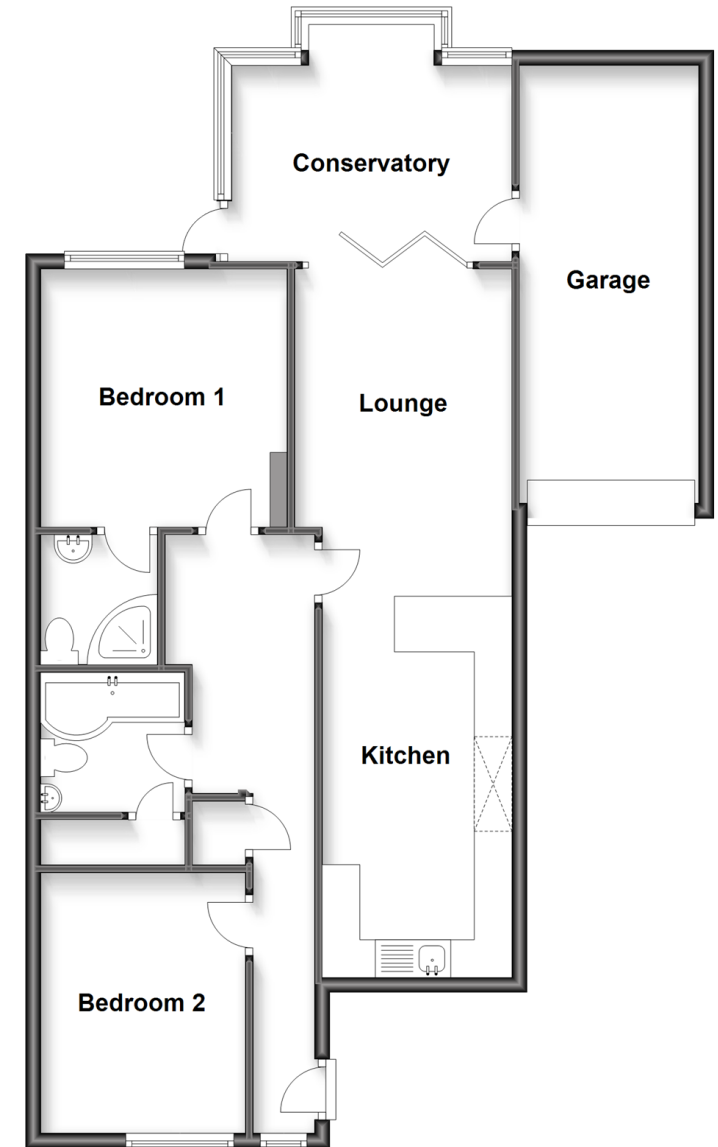
Front Garden

Rear Garden

Summer House

Garage & Off Road Parking

Ground Floor
Approx. 90.7 sq. metres (976.7 sq. feet)



Call Dover - 01304 214876 ■ wardsofKent.co.uk

- Legal advice should be taken to verify fixtures/fittings, planning, alterations and/or lease details
- Appliances & services are untested, dimensions are approximate and floor plans are not to scale
- Through a Homewise Home For Life Plan people aged 60+ can secure this property for up to 59% less, by purchasing a Lifetime Lease.



10735126/20230427/TE/OV