



Guide Price
£325,000

Freehold

3x  1x  2x 

**Loxwood Close,
Whitfield, Dover, Kent,
CT16**

OVER 60?

Secure this property
for up to **59% less!**

Wards
Helping you move forwards



Main features

- Large extended house in a sought-after location
- No onward chain complications
- Enclosed rear garden, perfect for children or pets
- Great access for A20/M20, perfect for commuters
- Garage & ample off-road parking

Accommodation

GROUND FLOOR

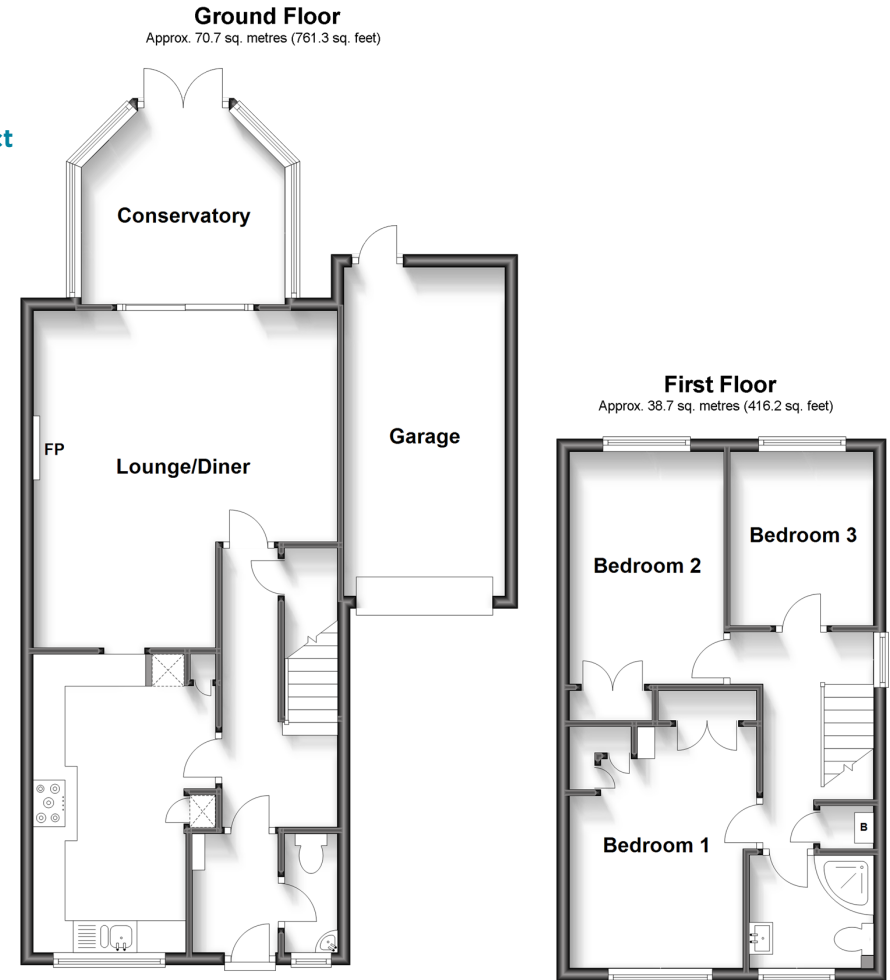
Entrance Hallway
Downstairs Cloakroom
Kitchen: 15'3 x 9'1 (4.65m x 2.77m)
Lounge/Diner: 17'3 x 15'8 (5.26m x 4.78m)
Conservatory To Rear: 11'5 x 10'7 (3.48m x 3.23m)

FIRST FLOOR

Landing
Shower Room
Bedroom 1: 12'4 x 9'5 (3.76m x 2.87m)
Bedroom 2: 11'11 x 8'10 (3.63m x 2.69m)
Bedroom 3: 8'11 x 7'4 (2.72m x 2.24m)

OUTSIDE

Front Garden
Rear Garden
Two sheds In The Rear Garden
Garage & Off Road Parking



Call Dover - 01304 214876 ■ wardsofkent.co.uk

- Legal advice should be taken to verify fixtures/fittings, planning, alterations and/or lease details
- Appliances & services are untested, dimensions are approximate and floor plans are not to scale
- Through a Homewise Home For Life Plan people aged 60+ can secure this property for up to 59% less, by purchasing a Lifetime Lease.

