



**Price**  
**£250,000**

**Freehold**

3x  1x  1x 

**St. Radigund's Road,  
Dover, Kent, CT17**

**OVER 60?**

Secure this property  
for up to **59% less!**

*Wards*  
Helping you move forwards



## Main features

- Large rear garden with brick built workshop
- Multi-fuel log burner
- Picturesque views across Dover
- Close to local schools and amenities
- Off road parking with power supply to install electric charging point

## Accommodation

### GROUND FLOOR

Entrance Porch  
Entrance Hallway  
Lounge : 12'5 x 12'4 (3.79m x 3.76m)  
Kitchen : 17'6 x 9'4 (5.34m x 2.85m)

### FIRST FLOOR

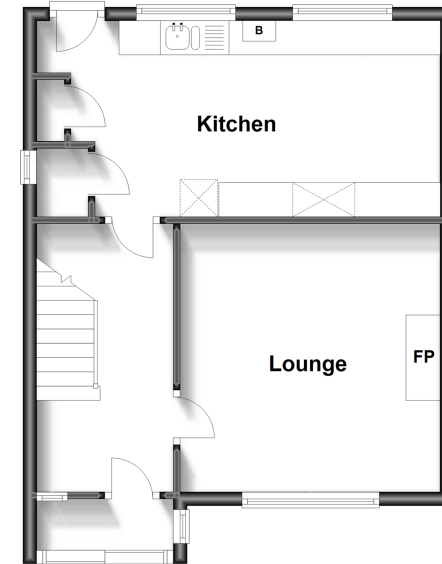
Landing  
Shower Room  
Bedroom 2: 12'4 x 9'7 (3.76m x 2.92m)  
Bedroom 3 : 9'4 x 8'9 (2.85m x 2.67m)  
Bedroom 1 : 13'9 x 10'9 (4.19m x 3.28m)

### OUTSIDE

Front Garden  
Rear Garden  
Off Road Parking  
Large Brick Built Workshop: 12'6 x 9'6 (3.81m x 2.90m)

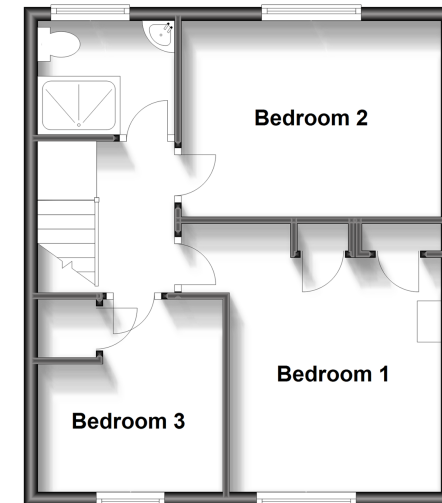
### Ground Floor

Approx. 42.3 sq. metres (455.0 sq. feet)



### First Floor

Approx. 40.6 sq. metres (436.7 sq. feet)



**Call Dover - 01304 214876 ■ [wardsofkent.co.uk](http://wardsofkent.co.uk)**

- Legal advice should be taken to verify fixtures/fittings, planning, alterations and/or lease details
- Appliances & services are untested, dimensions are approximate and floor plans are not to scale
- Through a Homewise Home For Life Plan people aged 60+ can secure this property for up to 59% less, by purchasing a Lifetime Lease.



10735147/20230809/GH/CB