

OVER 60?

Secure this property
for up to **59% less!**



Guide Price
£300,000
Freehold

3x  1x  1x 

The Ridgeway, River, Dover, Kent, CT17

Wards
Helping you move forwards



Main features

- Beautifully presented detached bungalow
- Open plan kitchen/lounge
- Sought after location of River Village
- Off street parking for a number of cars and a low maintenance rear garden with stunning views
- Ideal for commuting and with high speed rail link via Dover Priory

Accommodation

GROUND FLOOR

Entrance Lobby

Entrance Hall

Lounge/Kitchen: 23'0 x 17'1 (7.02m x 5.21m)

Bathroom: 8'3 x 6'8 (2.52m x 2.03m)

Bedroom 2: 11'7 x 8'2 (3.53m x 2.49m)

Bedroom 1: 11'7 x 11'4 (3.53m x 3.46m)

Bedroom 3: 10'9 x 8'1 (3.28m x 2.47m)

OUTSIDE

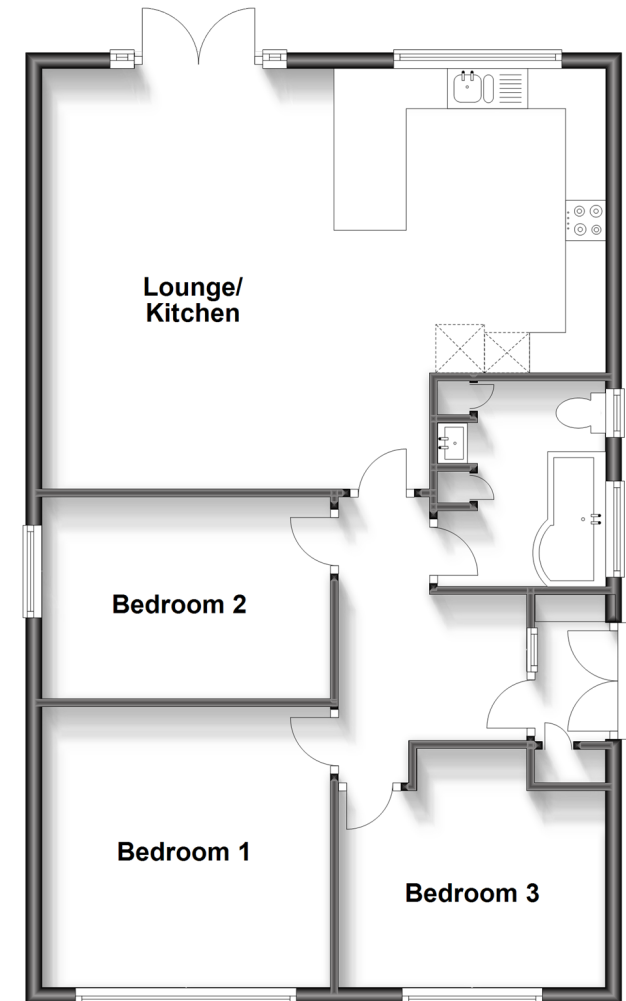
Front Garden

Rear Garden

Off Road Parking

Ground Floor

Approx. 80.4 sq. metres (865.0 sq. feet)



Call Dover - 01304 214876 ■ wardsofkent.co.uk

- Legal advice should be taken to verify fixtures/fittings, planning, alterations and/or lease details
- Appliances & services are untested, dimensions are approximate and floor plans are not to scale
- Through a Homewise Home For Life Plan people aged 60+ can secure this property for up to 59% less, by purchasing a Lifetime Lease.



10735151/20230906/GH/OV