



Guide Price
£255,000

Freehold

2x  1x  1x 

**Churchill Close, St
Margarets-At-Cliffe,
Dover, Kent, CT15**

OVER 60?

Secure this property
for up to **59% less!**

Wards
Helping you move forwards



Main features

- Ideal first time buy
- Off street parking for a number of vehicles
- Beautiful village of St Margaret's with beautiful beach walks
- No onward chain complications
- The village has a pub, a restaurant, a primary school as well as a bus service

Accommodation

GROUND FLOOR

Entrance Porch

Lounge : 15'6 x 13'9 (4.73m x 4.19m)

Kitchen: 15'7 x 8'2 (4.75m x 2.49m)

Utility Area : 13'9 x 4'9 (4.19m x 1.45m)

FIRST FLOOR

Landing

Bedroom 1 : 12'4 x 9'8 (3.76m x 2.95m)

Bedroom 2 : 12'3 x 8'9 (3.74m x 2.67m)

Shower Room : 6'3 x 5'4 (1.91m x 1.63m)

OUTSIDE

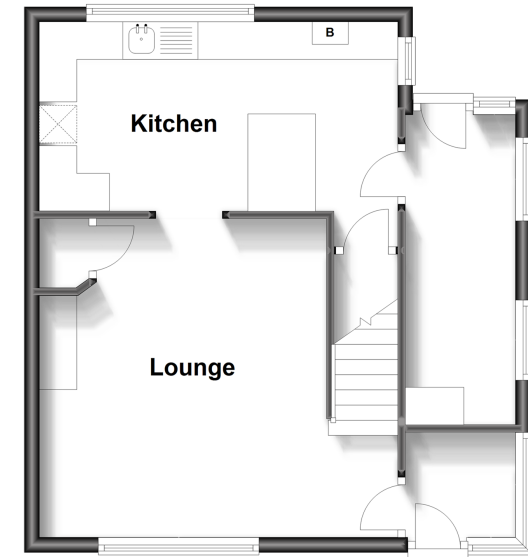
Front Garden

Rear Garden

Ample Off Road Parking

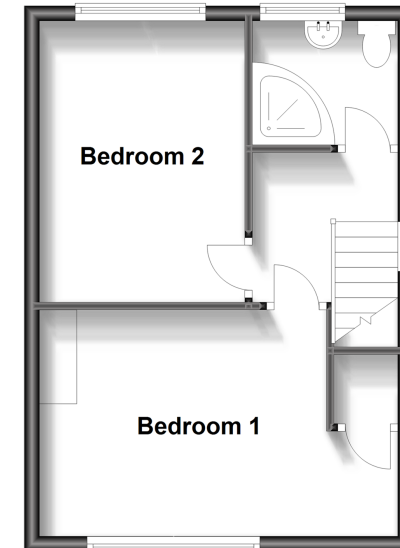
Ground Floor

Approx. 41.6 sq. metres (447.5 sq. feet)



First Floor

Approx. 32.8 sq. metres (352.6 sq. feet)



Call Dover - 01304 214876 ■ wardsofkent.co.uk

- Legal advice should be taken to verify fixtures/fittings, planning, alterations and/or lease details
- Appliances & services are untested, dimensions are approximate and floor plans are not to scale
- Through a Homewise Home For Life Plan people aged 60+ can secure this property for up to 59% less, by purchasing a Lifetime Lease.



10735175/20231018/GM/OV