



Price
£450,000

Freehold

3x  2x  1x 

**Bernards Gardens,
Shepherdswell, Dover,
Kent, CT15**

OVER 60?

Secure this property
for up to **59% less!**

Wards
Helping you move forwards



Main features

- Quiet cul-de-sac location
- No onward chain complications
- Garage and off road parking
- Shepherdswell is a beautiful village with a shop, school, pub and train station
- Beautifully presented throughout, with home office and en-suite to main bedroom

Accommodation

GROUND FLOOR

Entrance Hall

Office: 9'1 x 6'2 (2.77m x 1.88m)

Lounge: 15'8 x 13'9 (4.78m x 4.19m)

Bedroom 3: 9'9 x 8'6 (2.97m x 2.59m)

Kitchen: 11'9 x 8'5 (3.58m x 2.57m)

Dining Area: 14'5 x 7'2 (4.40m x 2.19m)

Bathroom : 7'5 x 6'1 (2.26m x 1.86m)

Bedroom 1: 12'9 x 9'9 (3.89m x 2.97m)

En-suite Shower Room: 10'1 x 5'8 (3.08m x 1.73m)

Bedroom 2: 10'8 x 8'8 (3.25m x 2.64m)

OUTSIDE

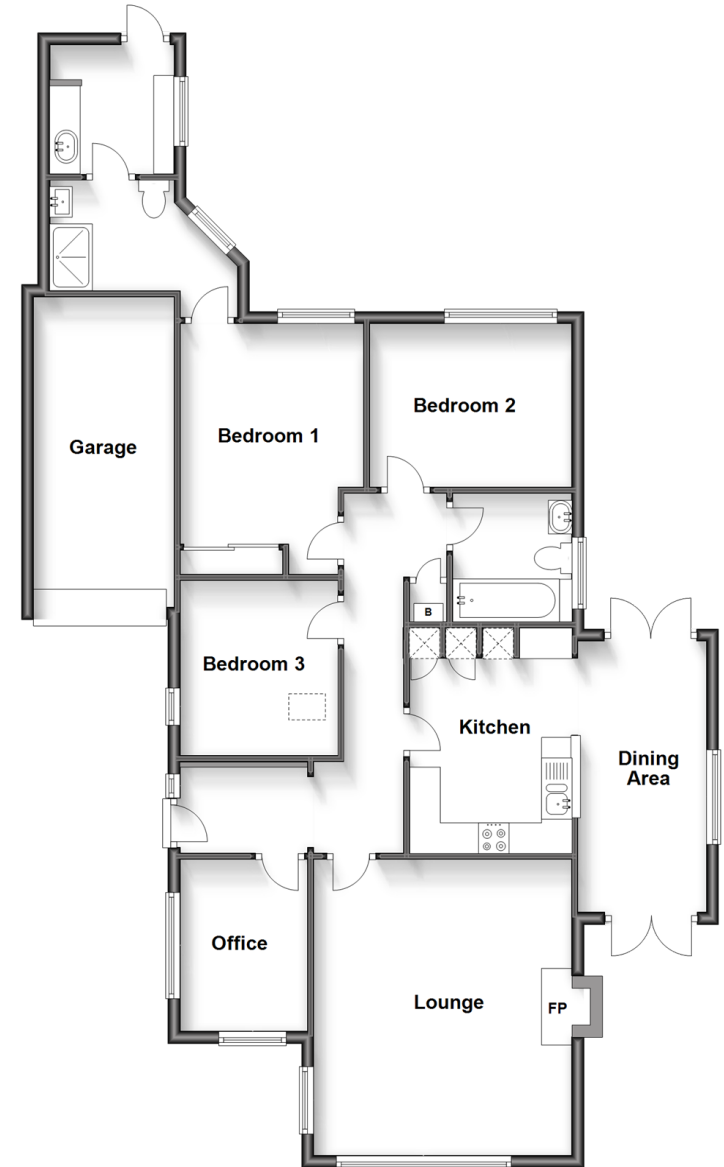
Front Garden

Garage

Off Road Parking

Rear Garden

Ground Floor
Approx. 114.7 sq. metres (1234.4 sq. feet)



Call Dover - 01304 214876 ■ wardsof Kent.co.uk

- Legal advice should be taken to verify fixtures/fittings, planning, alterations and/or lease details
- Appliances & services are untested, dimensions are approximate and floor plans are not to scale
- Through a Homewise Home For Life Plan people aged 60+ can secure this property for up to 59% less, by purchasing a Lifetime Lease.



10735186/20230701/TE/OV