



Guide Price
£230,000

Freehold

3x  1x  2x 

**Eastbrook Place, Maison
Dieu Road, Dover, Kent,
CT16**

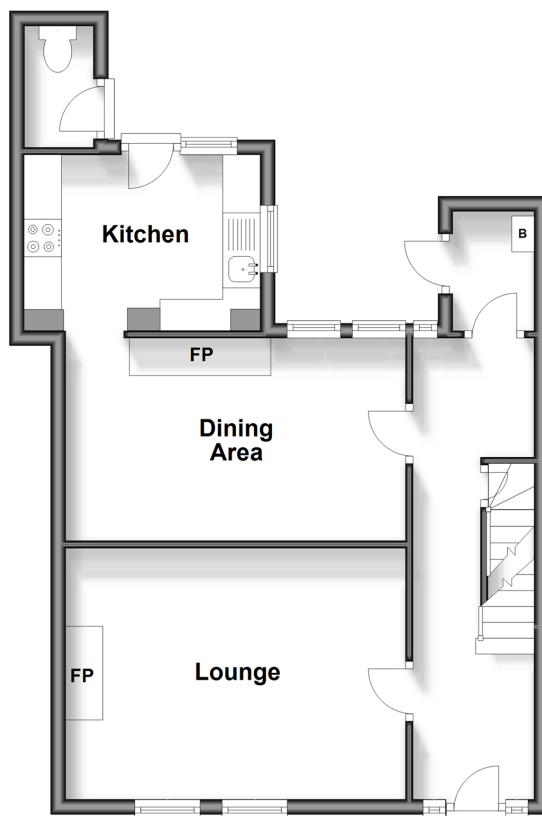
OVER 60?

Secure this property
for up to **59% less!**

Wards
Helping you move forwards

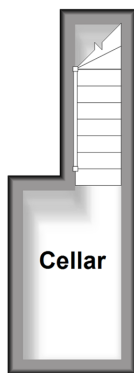
Ground Floor

Approx. 42.0 sq. metres (452.0 sq. feet)



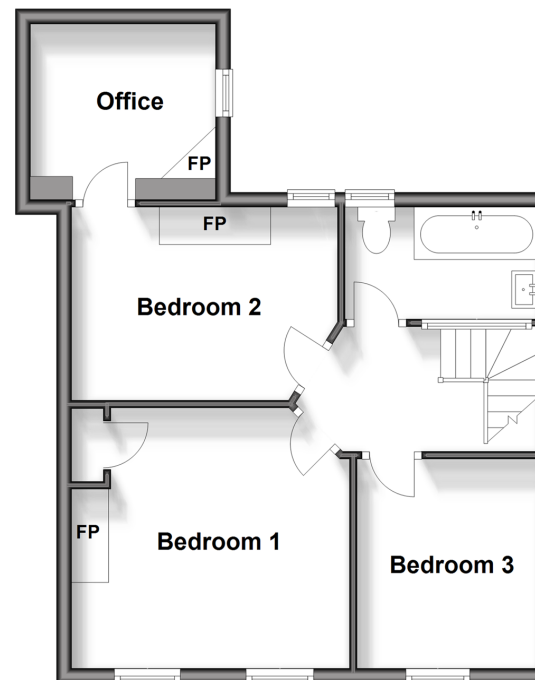
Basement

Approx. 4.3 sq. metres (46.5 sq. feet)



First Floor

Approx. 44.7 sq. metres (481.0 sq. feet)



Accommodation

GROUND FLOOR

Entrance Hallway
 Lounge : 14'9 x 11'2 (4.50m x 3.41m)
 Dining Area: 15'0 x 8'8 (4.58m x 2.64m)
 Kitchen: 10'4 x 6'1 (3.15m x 1.86m)
 Downstairs Toilet

BASEMENT

Cellar

FIRST FLOOR

Landing
 Bathroom : 8'5 x 5'0 (2.57m x 1.53m)
 Bedroom 2: 11'7 x 7'7 (3.53m x 2.31m)
 Office : 8'2 x 6'4 (2.49m x 1.93m)
 Bedroom 1: 12'3 x 11'2 (3.74m x 3.41m)
 Bedroom 3: 8'5 x 8'2 (2.57m x 2.49m)

OUTSIDE

Courtyard Style Garden



Main features

- Beautifully presented period house
- Recently refurbished and a brand new kitchen
- Low maintenance courtyard style garden
- Leave the car at home and walk into town with its shops and cafe's
- On a bus route, as well as Dover Priory railway station with its fast links to London



Nearest Schools

Primary Schools: Dover, St Mary's C of E Primary 0.0 miles, St Richard's Catholic Primary 0.3 miles, Charlton C of E Primary 0.6 miles
Secondary Schools: Dover College 0.3 miles, Dover Grammar School for Girls 0.5 miles.



Transport Information

Train Stations: Dover Priory 0.7 miles, Kearsney 2.9 miles, Martin Mill 4.0 miles



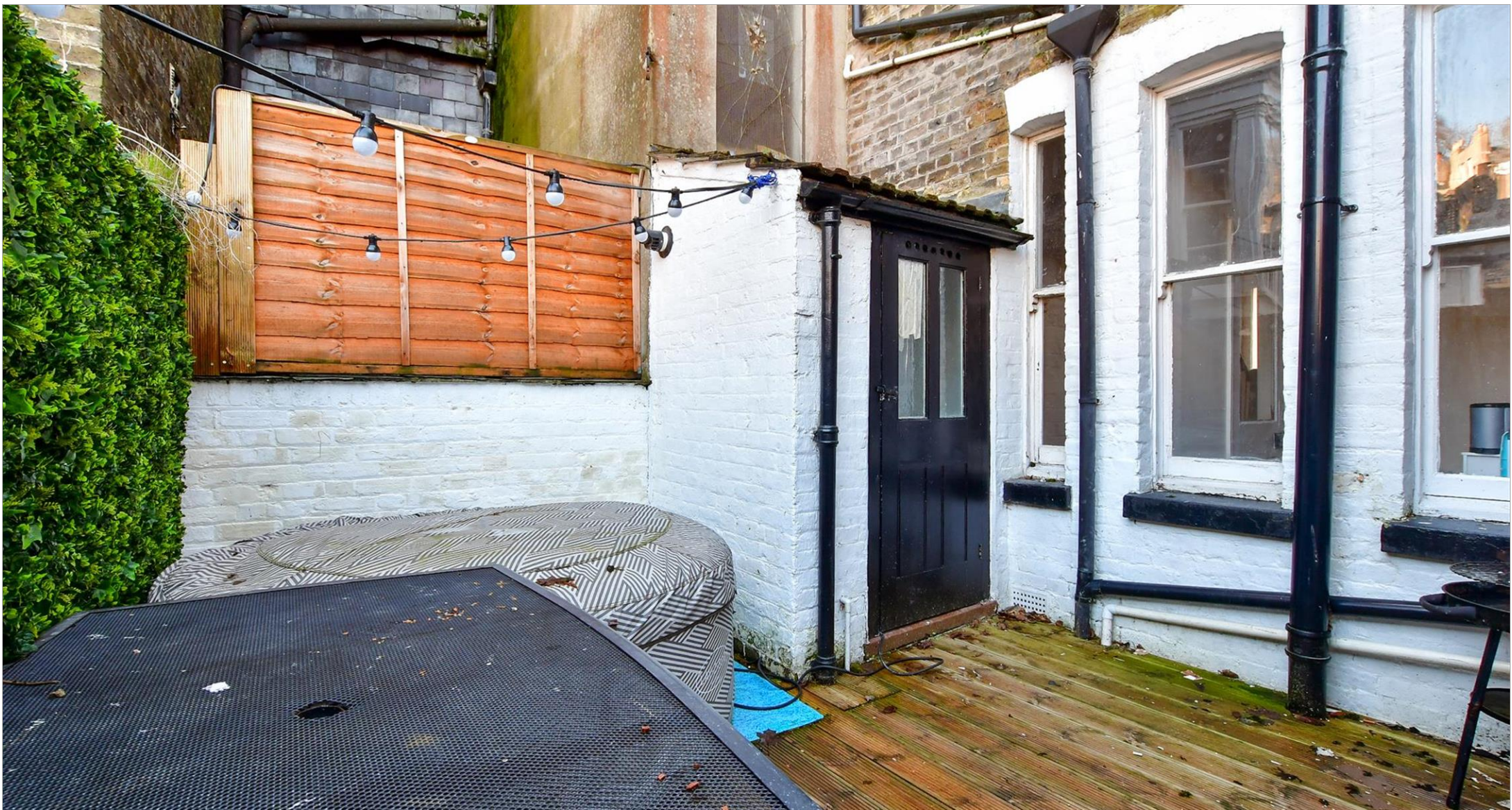
Address

Eastbrook Place, Maison Dieu Road, Dover, Kent, CT16



Directions

For directions to this property please contact us.



Wards
Helping you move forwards

Call Dover Branch 01304 214876 ■ wardsofkent.co.uk



■ Legal advice should be taken to verify fixtures/fittings, planning, alterations and/or lease details ■ Appliances & services are untested, dimensions are approximate and floor plans are not to scale
■ Through a Homewise Home For Life Plan people aged 60+ can secure this property for up to 59% less, by purchasing a Lifetime Lease.



10735188/20240208/GH/OV