



Guide Price
£500,000

Freehold

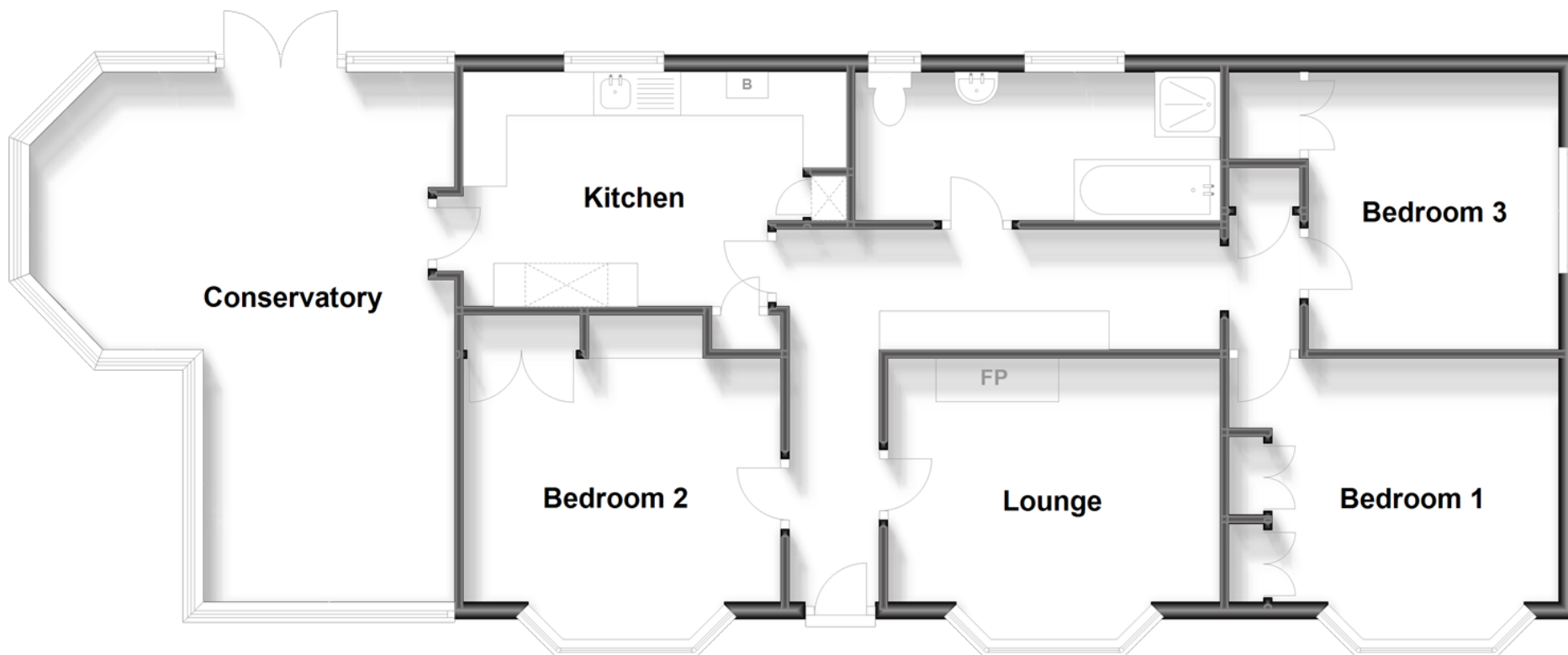
3x  1x  1x 

**Lewisham Road, River,
Dover, Kent, CT17**

Wards
Helping you move forwards

Ground Floor

Approx. 102.0 sq. metres (1098.3 sq. feet)



Accommodation

GROUND FLOOR

Entrance Hallway

Conservatory : 11'3 x 9'9 (3.43m x 2.97m) plus 21'2 x 9'5 (6.46m x 2.87m)

Kitchen: 14'5 x 9'1 (4.40m x 2.77m)

Bathroom : 13'8 x 5'6 (4.17m x 1.68m)

Bedroom 3: 10'5 x 9'4 (3.18m x 2.85m)

Bedroom 2 : 12'5 x 9'2 (3.79m x 2.80m)

Bedroom 1 : 11'8 x 10'8 (3.56m x 3.25m)

Lounge : 12'5 x 9'2 (3.79m x 2.80m)

OUTSIDE

Front & Rear Gardens

Double Garage

Off Road Parking



Main features

- Tucked away on a private drive with off street parking & double garage
- Peace and quiet in idyllic setting
- Set in a sought after village of River, with pub, post office and Co-op close by
- Easy access via A2/M2 & Dover town
- Close to Kearsney Abbey



Nearest Schools

Primary Schools: River Primary 0.1 miles, Temple Ewell C of E Primary 1.0 miles, White Cliffs Primary College for the Arts 1.2 miles
Secondary Schools: Dover Grammar School for Girls 1.7 miles, St Edmund's Catholic School 1.8 miles,



Transport Information

Train Stations: Kearsney 0.7 miles, Dover Priory 2.7 miles, Shepherdswell 5.6 miles



Address

Lewisham Road, River, Dover, Kent, CT17



Directions

For directions to this property please contact us.



Call Dover Branch 01304 214876 ■ wardsofkent.co.uk



■ Legal advice should be taken to verify fixtures/fittings, planning, alterations and/or lease details ■ Appliances & services are untested, dimensions are approximate and floor plans are not to scale



10735192/20231204/OV/OV