



Price
£375,000

Freehold

3x  1x  1x 

**Stonehall Road, Lydden,
Dover, Kent, CT15**

OVER 60?

Secure this property
for up to **59% less!**

Wards
Helping you move forwards



Main features

- Open plan kitchen & diner with lots of natural light
- Stunning views of green rolling hills
- Lydden has easy access via the A2 to Folkestone, Canterbury and Dover towns
- Off road parking at the rear
- Beautiful mature rear garden with space to grow your own vegetables

Accommodation

GROUND FLOOR

Hallway

Kitchen: 14'4 x 10'9 (4.37m x 3.28m)

Dining Area: 13'4 x 11'9 (4.07m x 3.58m)

Lounge: 11'9 x 11'9 (3.58m x 3.58m)

Downstairs Cloakroom

Conservatory: 9'7 x 4'7 (2.92m x 1.40m)

FIRST FLOOR

Landing

Bdroom 1: 12'11 x 11'9 (3.94m x 3.58m)

Bedroom 2: 14'3 x 8'7 (4.35m x 2.62m)

Bedroom 3: 11'8 x 10'8 (3.56m x 3.25m)

Bathroom : 9'4 x 5'9 (2.85m x 1.75m)

OUTSIDE

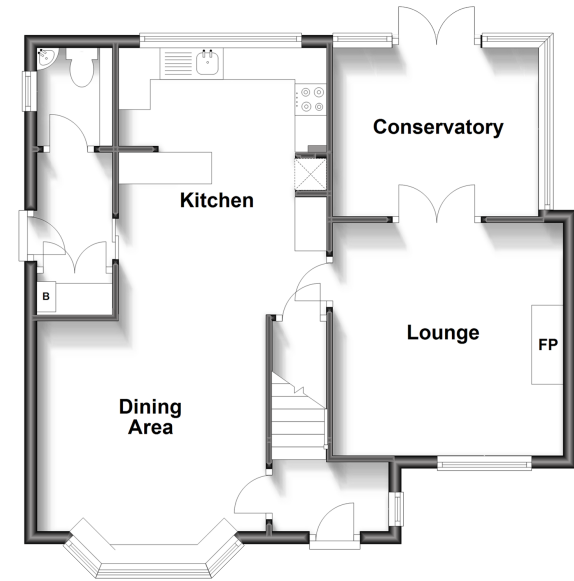
Front Garden

Off Road Parking at rear

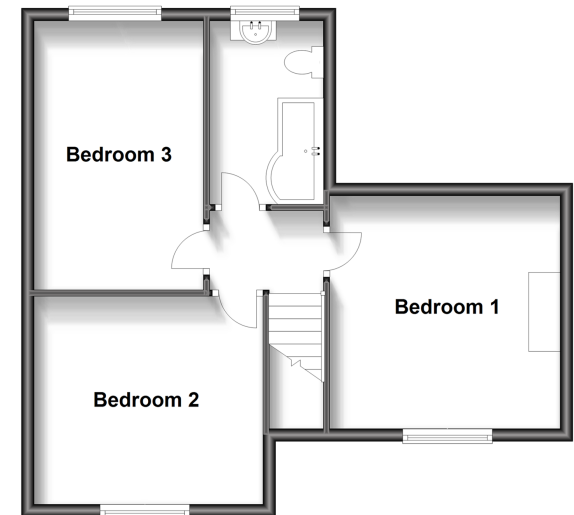
Rear Garden

Downstairs Cloakroom

Ground Floor
Approx. 60.4 sq. metres (649.7 sq. feet)



First Floor
Approx. 47.7 sq. metres (513.2 sq. feet)



Call Dover - 01304 214876 ■ wardsofKent.co.uk

- Legal advice should be taken to verify fixtures/fittings, planning, alterations and/or lease details
- Appliances & services are untested, dimensions are approximate and floor plans are not to scale
- Through a Homewise Home For Life Plan people aged 60+ can secure this property for up to 59% less, by purchasing a Lifetime Lease.



10735197/20230816/TE/OV