



Guide Price
£390,000

Freehold

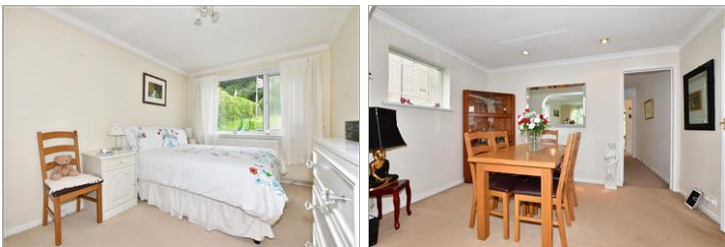
3x  1x  1x 

**Deanwood Road, River,
Dover, Kent, CT17**

OVER 60?

Secure this property
for up to **59% less!**

Wards
Helping you move forwards



Main features

- Extended home in a village location
- Garage and off-street parking
- Stunning views from garden across River
- Village of River has a school, Co-op, pub, and park, all you could need
- Easy access to Folkestone, Canterbury & Dover towns

Accommodation

GROUND FLOOR

Entrance Porch: 6'9 x 4'8 (2.06m x 1.42m)

Entrance Hallway

Lounge : 17'7 x 12'1 (5.36m x 3.69m)

Dining Area : 12'1 x 7'6 (3.69m x 2.29m)

Kitchen: 10'10 x 7'1 (3.30m x 2.16m)

Inner Hallway

Bedroom 1 : 12'10 x 8'11 (3.91m x 2.72m)

Bedroom 2 : 10'4 x 8'10 (3.15m x 2.69m)

Bedroom 3 : 9'1 x 8'7 (2.77m x 2.62m)

Bathroom : 6'7 x 5'0 (2.01m x 1.53m)

OUTSIDE

Front Garden

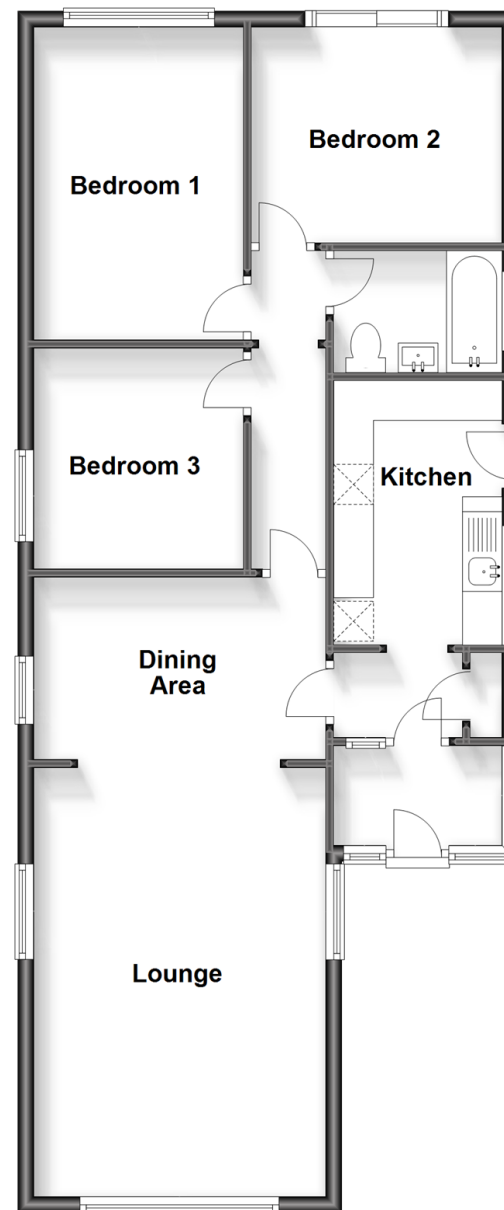
Rear Garden

Garage : 18'3 x 8'2 (5.57m x 2.49m)

Off Road Parking

Ground Floor

Approx. 77.3 sq. metres (831.6 sq. feet)



Call Dover - 01304 214876 ■ wardsofKent.co.uk

- Legal advice should be taken to verify fixtures/fittings, planning, alterations and/or lease details
- Appliances & services are untested, dimensions are approximate and floor plans are not to scale
- Through a Homewise Home For Life Plan people aged 60+ can secure this property for up to 59% less, by purchasing a Lifetime Lease.



10735204/20231026/SB/OV