



**OVER 60?**

Secure this property  
for up to **59% less!**

**Price**

**£170,000**

**Leasehold**

1x  1x  1x 

**Ground Floor Flat,  
Castle Avenue, Dover,  
Kent, CT16**

*Wards*  
Helping you move forwards



## Main features

- Beautiful ground floor apartment set in a sought after location
- Off road parking
- Bright and airy with a breathtaking view
- Close proximity to Dover castle and the beautiful Connaught Park
- Ideal first time buy or buy to let investment.

## Accommodation

### SPLIT LEVEL GROUND FLOOR

#### Entrance Hallway

Lounge : 18'6 x 13'4 (5.64m x 4.07m)

Bedroom : 17'8 x 13'4 (5.39m x 4.07m)

Kitchen : 10'4 x 5'11 (3.15m x 1.80m)

Bathroom

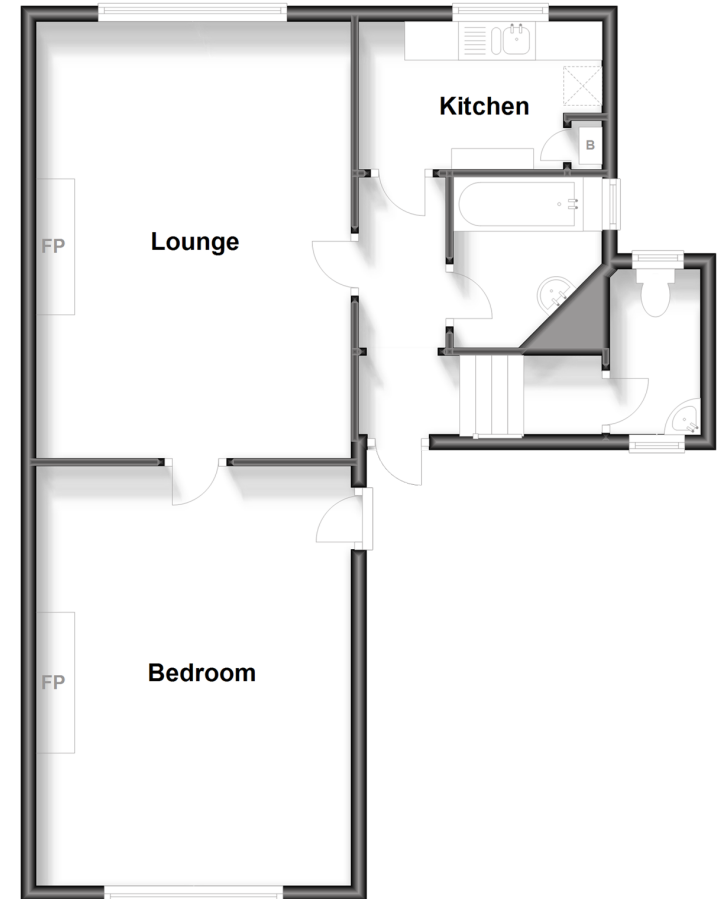
Separate Cloakroom

### OUTSIDE

Off Road Parking

### Split Level Ground Floor

Approx. 65.6 sq. metres (705.8 sq. feet)



**Call Dover - 01304 214876 ■ [wardsofkent.co.uk](http://wardsofkent.co.uk)**

- Legal advice should be taken to verify fixtures/fittings, planning, alterations and/or lease details
- Appliances & services are untested, dimensions are approximate and floor plans are not to scale
- Through a Homewise Home For Life Plan people aged 60+ can secure this property for up to 59% less, by purchasing a Lifetime Lease.