



Price
£475,000

Freehold

3x  1x  1x 

**Chisnall Road, Dover,
Kent, CT17**

Wards
Helping you move forwards



Main features

- With stunning views over River
- Double garage & off street parking
- Close to Kearsney Abbey, ideal for walks
- Easy access for to A256/M2 with close access to Folkestone, Canterbury, Deal & Dover
- Corner plot with generous mature garden on a quiet private road

Accommodation

GROUND FLOOR

Entrance Hallway

Lounge : 12'8 x 12'1 (3.86m x 3.69m)

Dining Room: 12'5 x 10'4 (3.79m x 3.15m)

Lean-To: 17'6 x 5'10 (5.34m x 1.78m)

Kitchen: 14'7 x 8'9 (4.45m x 2.67m)

Downstairs Cloakroom

FIRST FLOOR

Landing

Bedroom 3 : 16'6 x 8'1 (5.03m x 2.47m)

Bedroom 2 : 12'9 x 10'4 (3.89m x 3.15m)

Bedroom 1 : 12'7 x 12'3 (3.84m x 3.74m)

Bathroom : 7'5 x 6'4 (2.26m x 1.93m)

OUTSIDE

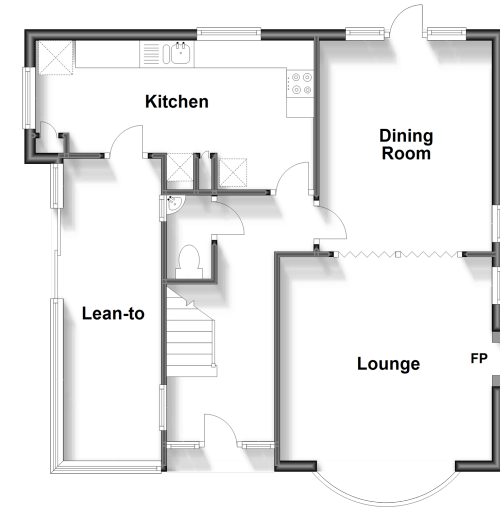
Front Garden

Rear Garden

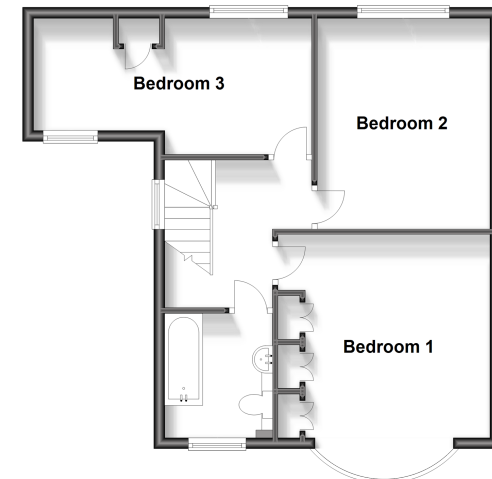
Double Garage & Parking

Large Shed

Ground Floor
Approx. 60.9 sq. metres (655.3 sq. feet)



First Floor
Approx. 51.2 sq. metres (551.5 sq. feet)



Call Dover - 01304 214876 ■ wardsof Kent.co.uk

- Legal advice should be taken to verify fixtures/fittings, planning, alterations and/or lease details
- Appliances & services are untested, dimensions are approximate and floor plans are not to scale



10735233/20231214/RW/OV