



Guide Price
£345,000

Freehold

3x  1x  1x 

**Forge Field, West
Hougham, Dover, Kent,
CT15**

OVER 60?

Secure this property
for up to **59% less!**

Wards
Helping you move forwards



Main features

- Charming family home in sought after village location.
- Off road parking
- Close proximity to both Folkestone and Dover
- Wide range of country walks at your disposal
- Ideal home for a growing family

Accommodation

GROUND FLOOR

Entrance Hallway

Lounge : 17'8 x 14'5 (5.39m x 4.40m)

Dining Area: 12'9 x 9'2 (3.89m x 2.80m)

Kitchen: 14'2 x 12'3 (4.32m x 3.74m)

Utility

Downstairs Cloakroom

FIRST FLOOR

Landing

Bedroom 1 : 10'9 x 9'10 (3.28m x 3.00m)

Bedroom 3: 7'9 x 7'5 (2.36m x 2.26m)

Bedroom 2 : 10'0 x 9'5 (3.05m x 2.87m)

Family Bathroom

OUTSIDE

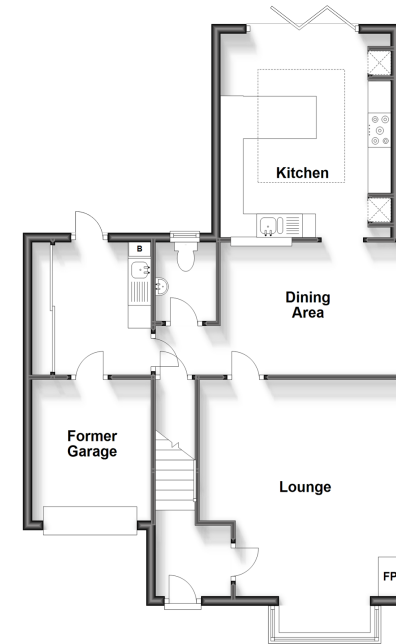
Front Garden

Rear Garden

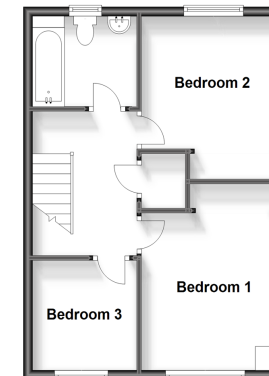
Off Road Parking

Former Garage

Ground Floor
Approx. 73.6 sq. metres (792.0 sq. feet)



First Floor
Approx. 40.4 sq. metres (434.5 sq. feet)



Call Dover - 01304 214876 ■ wardsof Kent.co.uk

- Legal advice should be taken to verify fixtures/fittings, planning, alterations and/or lease details
- Appliances & services are untested, dimensions are approximate and floor plans are not to scale
- Through a Homewise Home For Life Plan people aged 60+ can secure this property for up to 59% less, by purchasing a Lifetime Lease.



10735246/20230925/GM/CB