



Price

£170,000

Leasehold

2x  1x  1x 

**Nonington Court,
Sandwich Road,
Nonington, Kent, CT15**

OVER 60?

Secure this property
for up to **59% less!**

Wards
Helping you move forwards



Main features

- Apartment with 3 balconies
- Residents gym and tennis court
- Large communal gardens
- Rural location with good road access to Deal, Canterbury, Folkestone and Dover
- Beautifully presented throughout, also has large storage cupboard and a utility room

Accommodation

SECOND FLOOR

Entrance Hallway

Lounge : 14'7 x 7'9 (4.45m x 2.36m)

Balcony

Kitchen : 11'9 x 8'2 (3.58m x 2.49m)

Bedroom 1: 12'5 x 8'2 (3.79m x 2.49m)

Balcony

Bedroom 2 : 11'7 x 8'2 (3.53m x 2.49m)

Balcony

Utility Room: 5'1 x 5'0 (1.55m x 1.53m)

Storage Cupboard

Bathroom : 7'8 x 4'8 (2.34m x 1.42m)

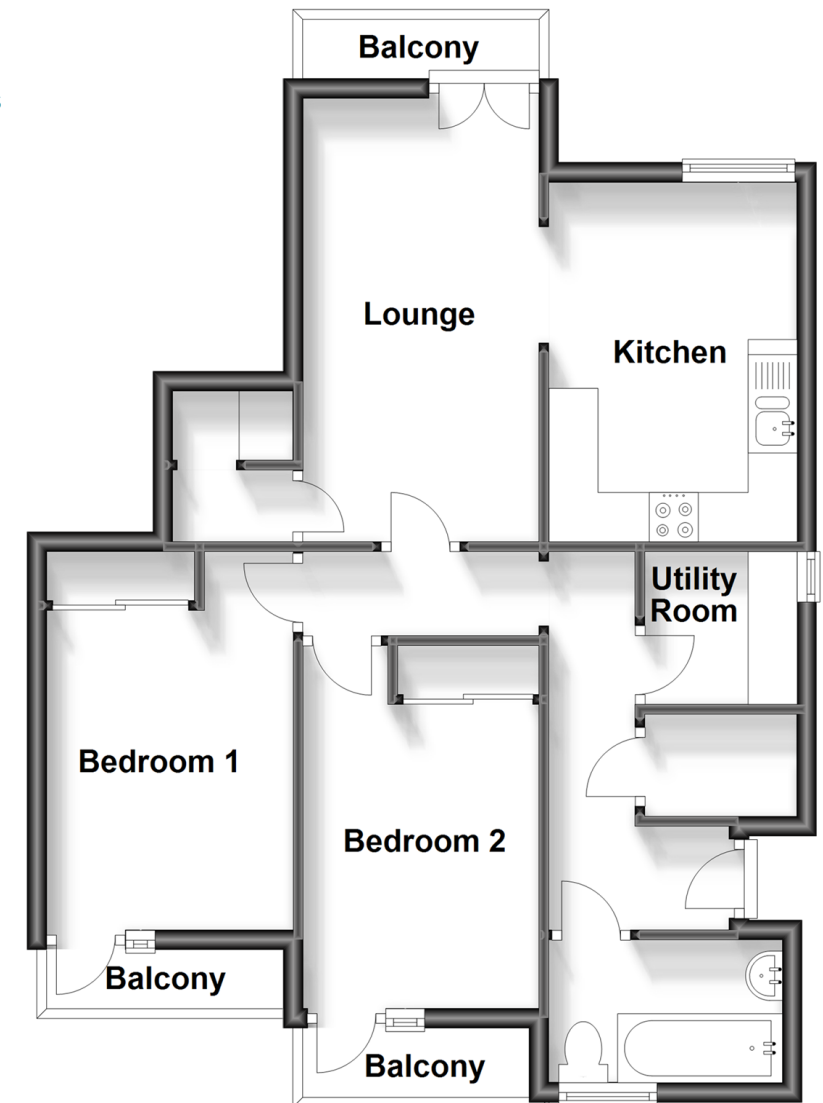
OUTSIDE

Communal Gardens

Communal Parking

Second Floor

Approx. 57.3 sq. metres (617.0 sq. feet)



Call Dover - 01304 214876 ■ wardsofkent.co.uk

- Legal advice should be taken to verify fixtures/fittings, planning, alterations and/or lease details
- Appliances & services are untested, dimensions are approximate and floor plans are not to scale
- Through a Homewise Home For Life Plan people aged 60+ can secure this property for up to 59% less, by purchasing a Lifetime Lease.



10735261/20230919/TE/OV