



Price

£280,000

Leasehold

2x  1x  1x 

**The Gateway, Dover,
Kent, CT16**

OVER 60?

Secure this property
for up to **59% less!**

Wards
Helping you move forwards



Main features

- Sought after sea views across the Channel
- No onward chain complications
- Lift to the apartment
- Walking distance to the town centre & local amenities
- Communal gardens, lockable storage cupboard & residents parking

Accommodation

FIFTH FLOOR

Entrance Hallway

Lounge : 19'5 x 12'5 (5.92m x 3.79m)

Balcony From The Lounge

Kitchen: 11'8 (3.56m) x 11'2 (3.41m)
narrowing to 6'9 (2.06m)

Inner Hallway

Bathroom

Bedroom 2 : 11'4 x 9'1 (3.46m x 2.77m)

Bedroom 1 : 12'7 x 11'6 (3.84m x 3.51m)

Balcony From Bedroom 1

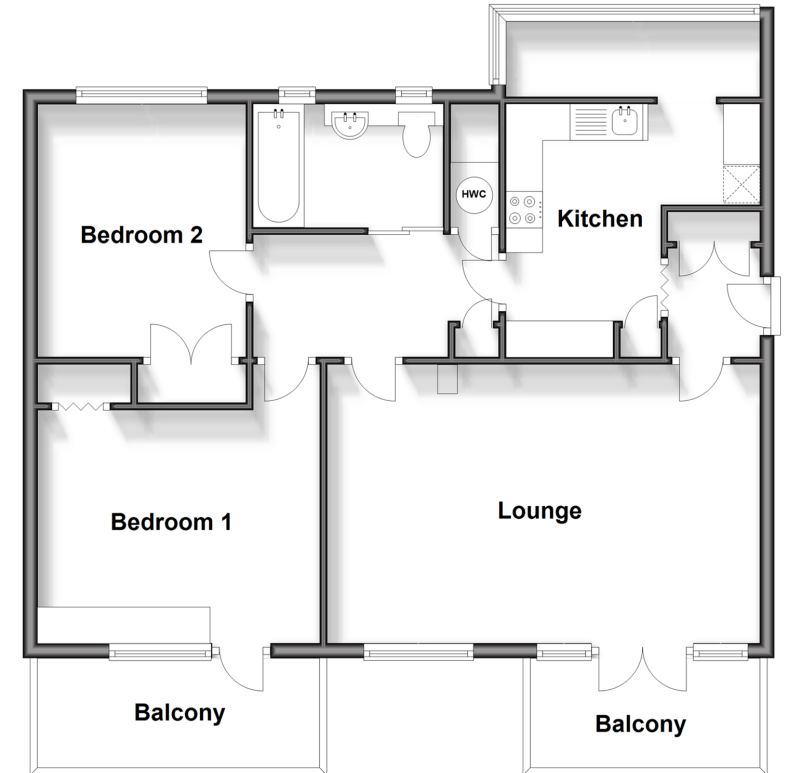
OUTSIDE

Storage Shed

Communal Gardens

Residents Parking

Fifth Floor
Approx. 77.2 sq. metres (830.6 sq. feet)



Call Dover - 01304 214876 ■ wardsofkent.co.uk

- Legal advice should be taken to verify fixtures/fittings, planning, alterations and/or lease details
- Appliances & services are untested, dimensions are approximate and floor plans are not to scale
- Through a Homewise Home For Life Plan people aged 60+ can secure this property for up to 59% less, by purchasing a Lifetime Lease.



10735277/20240327/CB/CB