



OVER 60?

Secure this property
for up to **59% less!**

Price

£325,000

Freehold

3x  2x  1x 

**Arable Drive, Whitfield,
Dover, Kent, CT16**

Wards
Helping you move forwards



Main features

- En-suite off of Bedroom 1
- Carport & off-road parking for 3 cars
- Immaculately presented with neutral decor throughout
- Good size rear garden perfect for children and pets
- Sought after location of Whitfield, close to local shops and amenities

Ground Floor

Approx. 41.8 sq. metres (450.2 sq. feet)

First Floor

Approx. 42.2 sq. metres (454.1 sq. feet)

Accommodation

GROUND FLOOR

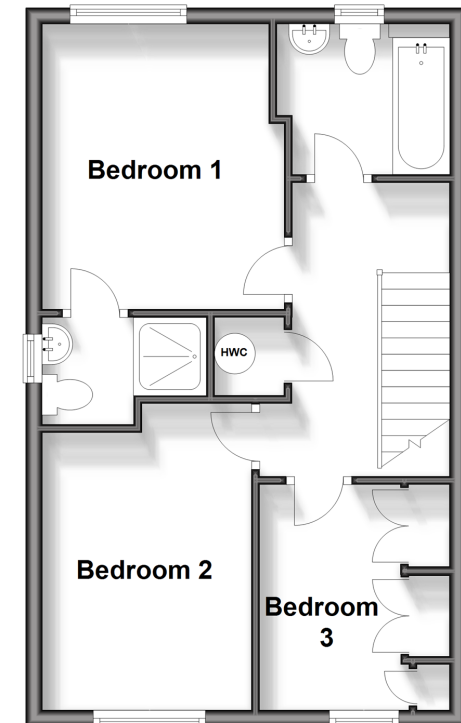
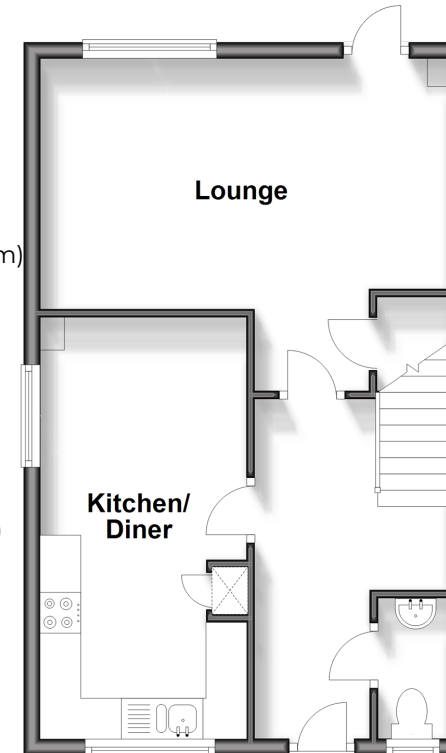
Entrance Hallway
Downstairs Cloakroom
Kitchen/Diner : 17'0 x 8'6 (5.19m x 2.59m)
Lounge : 16'2 x 13'5 (4.93m x 4.09m)

FIRST FLOOR

Landing
Bathroom
Bedroom 1 : 11'6 x 9'8 (3.51m x 2.95m)
En-Suite Shower Room
Bedroom 2 : 12'8 x 8'6 (3.86m x 2.59m)
Bedroom 3 : 9'5 x 7'5 (2.87m x 2.26m)

OUTSIDE

Front Garden
Rear Garden
Off Road Parking
Carport



Call Dover - 01304 214876 ■ wardsofKent.co.uk

- Legal advice should be taken to verify fixtures/fittings, planning, alterations and/or lease details
- Appliances & services are untested, dimensions are approximate and floor plans are not to scale
- Through a Homewise Home For Life Plan people aged 60+ can secure this property for up to 59% less, by purchasing a Lifetime Lease.



10735335/20240319/TE/CB