



OVER 60?

Secure this property
for up to **59% less!**

Price
£175,000

Freehold

2x  1x  1x 

**Brompton Cottages, The
Street, Guston, Dover,
Kent, CT15**

Wards
Helping you move forwards

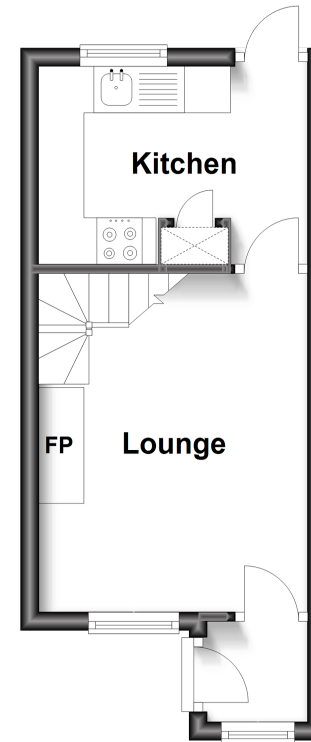


Main features

- Refurbished cottage in village location of Guston
- Good size rear garden, ideal for Summer
- Good road access to Dover and Deal
- No onward chain complications
- Ideal first time buy or ideal weekend retreat form busy city life

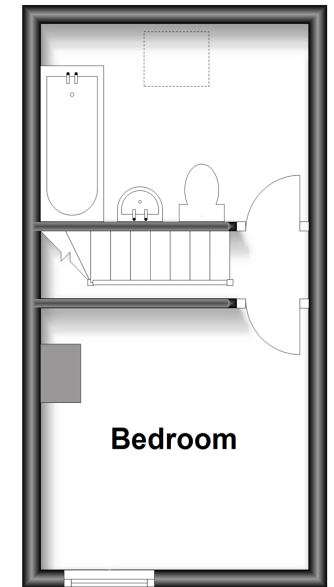
Split Level Ground Floor

Approx. 18.8 sq. metres (202.4 sq. feet)



First Floor

Approx. 17.5 sq. metres (188.3 sq. feet)



Accommodation

SPLIT LEVEL GROUND FLOOR

Entrance Porch

Lounge : 11'8 x 9'9 (3.56m x 2.97m)

Kitchen : 9'8 x 7'4 (2.95m x 2.24m)

FIRST FLOOR

Landing

Bathroom : 9'7 x 6'7 (2.92m x 2.01m)

Bedroom : 9'9 x 9'2 (2.97m x 2.80m)

OUTSIDE

Rear Garden

Call Dover - 01304 214876 ■ wardsofkent.co.uk

- If buying to let, the energy rating will need to be improved to at least 'E' rating before you can let the property
- Legal advice should be taken to verify fixtures/fittings, planning, alterations and/or lease details
- Appliances & services are untested, dimensions are approximate and floor plans are not to scale
- Through a Homewise Home For Life Plan people aged 60+ can secure this property for up to 59% less, by purchasing a Lifetime Lease.

EPC RATING 1000	CURRENT: C(15)	POTENTIAL: A(131)
10735345/20240220/GM/OV		