

OVER 60?

Secure this property
for up to **59% less!**

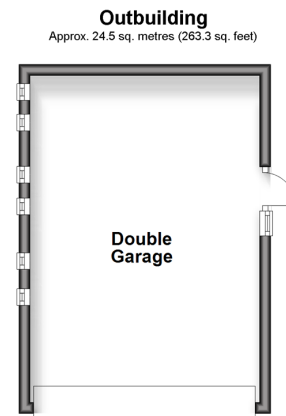
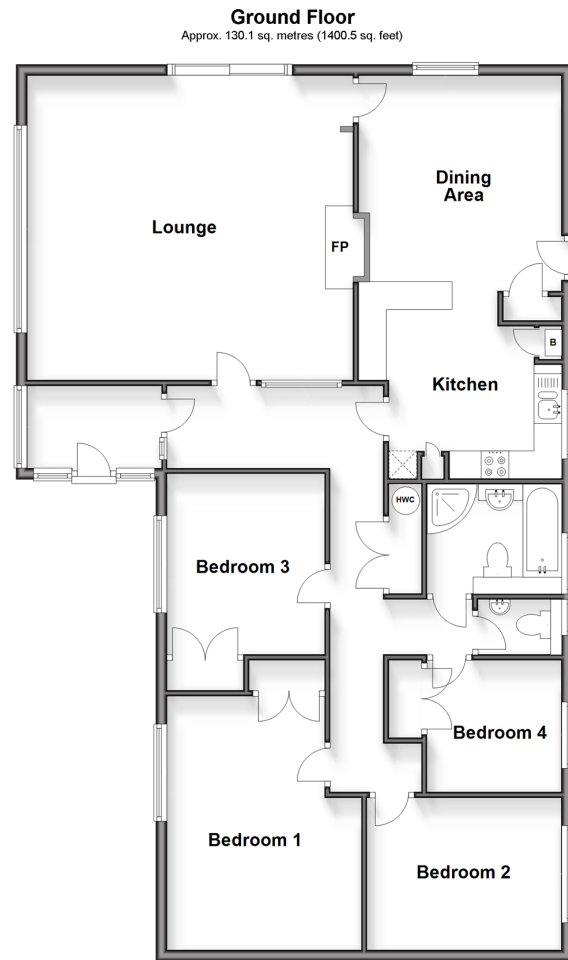


Guide Price
£425,000
Freehold

4x  1x  1x 

Danes Court, Dover, Kent, CT16

Wards
Helping you move forwards



Accommodation

GROUND FLOOR

Entrance Porch
Entrance Hallway
Lounge : 19'3 x 18'7 (5.87m x 5.67m)
Dining Area : 12'7 x 12'1 (3.84m x 3.69m)
Kitchen : 11'9 x 9'2 (3.58m x 2.80m)

Bedroom 2 : 10'7 x 9'3 (3.23m x 2.82m)
Bedroom 1 : 15'2 x 9'3 (4.63m x 2.82m)
Bedroom 3 : 11'5 x 9'2 (3.48m x 2.80m)
Bedroom 4 : 8'3 x 7'8 (2.52m x 2.34m)
Cloakroom
Bathroom : 7'9 x 6'4 (2.36m x 1.93m)

OUTBUILDING

Double Garage

OUTSIDE

Wrap Around Garden
Driveway/Parking



Main features

- Sought after location of Dover
- Stunning views across Dover town
- Double garage and off road parking, ideal for when you have visitors
- Dover Priory railway station has a high speed link to London
- Short distance from local schools and Dover town



Nearest Schools

Primary Schools: Charlton C of E Primary 0.2 miles, Barton Junior School 0.2 miles, St Richard's Catholic Primary 0.3 miles. Secondary Schools: St Edmund's Catholic School 0.1 miles, Dover Grammar School for Girls 0.2 miles, Dover College 0.7 miles.



Transport Information

Train Stations: Dover Priory 0.8 miles, Kearsney 1.8 miles, Martin Mill 2.8 miles



Address

Danes Court, Dover, Kent, CT16



Directions

For directions to this property please contact us.



Wards
Helping you move forwards

Call Dover Branch 01304 214876 ■ wardsofkent.co.uk



■ Legal advice should be taken to verify fixtures/fittings, planning, alterations and/or lease details ■ Appliances & services are untested, dimensions are approximate and floor plans are not to scale
■ Through a Homewise Home For Life Plan people aged 60+ can secure this property for up to 59% less, by purchasing a Lifetime Lease.



10735355/20240322/OV/OV