



**Price**

**£140,000**

**Leasehold**

2x  1x  1x 

**Coombe Valley Road,  
Dover, Kent, CT17**

**OVER 60?**

Secure this property  
for up to **59% less!**

*Wards*  
Helping you move forwards



## Main features

- Ground floor flat
- Being sold with no onward chain
- Free car park only a short walk away
- Ideal as a first time purchase or investment property
- Close to local shops, schools, and hospital

## Accommodation

### GROUND FLOOR

Lounge/Diner : 16'7 x 15'2 (5.06m x 4.63m)

Kitchen : 21'3 x 7'4 (6.48m x 2.24m)

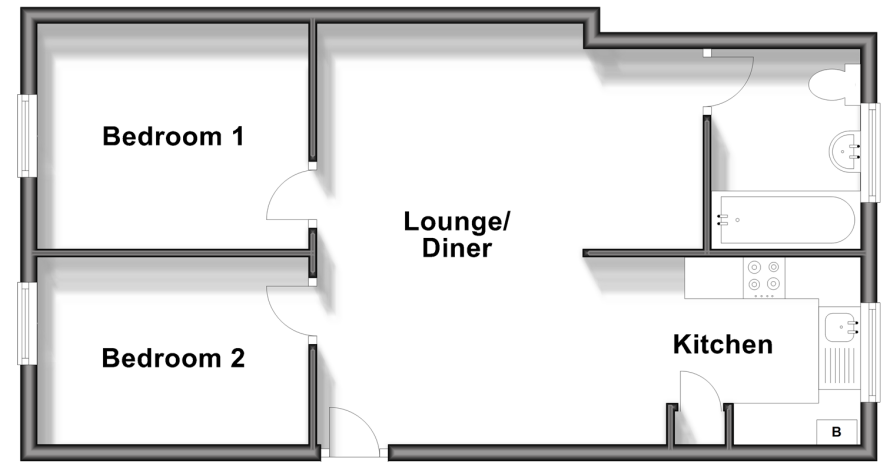
Bedroom 2 : 10'7 x 7'5 (3.23m x 2.26m)

Bedroom 1: 10'7 x 8'9 (3.23m x 2.67m)

Bathroom

### Ground Floor

Approx. 48.9 sq. metres (526.8 sq. feet)



**Call Dover - 01304 214876 ■ [wardsofkent.co.uk](http://wardsofkent.co.uk)**

- Legal advice should be taken to verify fixtures/fittings, planning, alterations and/or lease details
- Appliances & services are untested, dimensions are approximate and floor plans are not to scale
- Through a Homewise Home For Life Plan people aged 60+ can secure this property for up to 59% less, by purchasing a Lifetime Lease.



10735359/20240109/TE/CB