



Price
£600,000

Freehold

4x  1x  2x 

**Hazling Dane,
Shepherdswell, Kent,
CT15**

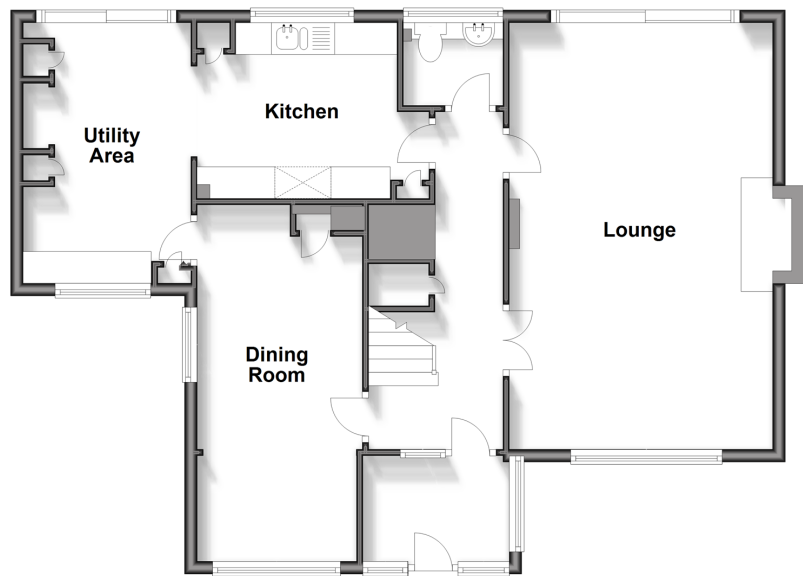
OVER 60?

Secure this property
for up to **59% less!**

Wards
Helping you move forwards

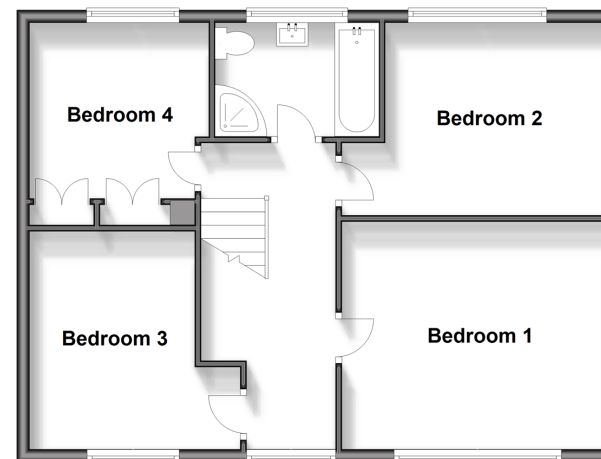
Split Level Ground Floor

Approx. 81.4 sq. metres (876.0 sq. feet)



First Floor

Approx. 61.4 sq. metres (660.5 sq. feet)



Accommodation

SPLIT LEVEL GROUND FLOOR

Entrance Porch
Entrance Hall
Dining Room : 16'9 x 8'6 (5.11m x 2.59m)
Lounge : 22'7 x 13'7 (6.89m x 4.14m)
Downstairs Cloakroom
Kitchen : 11'0 x 9'0 (3.36m x 2.75m)
Utility Area: 14'1 x 8'7 (4.30m x 2.62m)

FIRST FLOOR

Landing
Bedroom 1 : 13'8 x 11'7 (4.17m x 3.53m)
Bedroom 2 : 11'5 x 10'1 (3.48m x 3.08m)
Bedroom 3 : 11'3 x 10'9 (3.43m x 3.28m)
Bedroom 4 : 9'1 x 9'0 (2.77m x 2.75m)
Family Bathroom

OUTSIDE

Front Garden
Rear Garden
Off Road Parking
Large Garden Shed



Main features

- Immaculate family home set in a sought-after location
- Beautifully presented throughout
- Off road parking, ideal for guests
- Large enclosed rear garden, perfect for summer barbecues
- Positioned in the village of Sheperdswell with easy access to the A2/M2



Nearest Schools

Primary Schools: Sibertswold C of E Primary at Sheperdswell 0.6 miles, Eythorne Elvington Community Primary 1.7 miles, Lydden Primary 2.5 miles
Secondary Schools: Dover Christchurch Academy 4.8 miles, Dover College 5.0 miles.



Transport Information

Train Stations: Sheperdswell 0.9 miles, Snowdown 3.8 miles, Adisham 4.1 miles, Bekesbourne 4.1 miles



Address

Hazling Dane, Sheperdswell, Kent, CT15



Directions

For directions to this property please contact us.



Wards
Helping you move forwards

Call Dover Branch 01304 214876 ■ wardsofkent.co.uk



■ Legal advice should be taken to verify fixtures/fittings, planning, alterations and/or lease details ■ Appliances & services are untested, dimensions are approximate and floor plans are not to scale
■ Through a Homewise Home For Life Plan people aged 60+ can secure this property for up to 59% less, by purchasing a Lifetime Lease.



10735366/20231123/TE/CB