



OVER 60?

Secure this property
for up to **59% less!**

Price

£585,000

Freehold

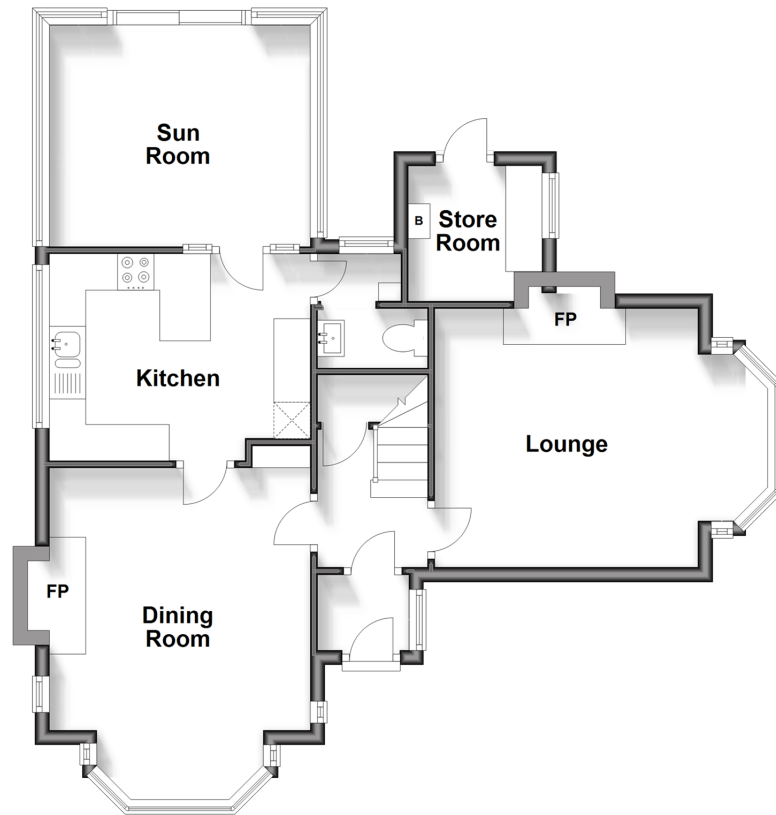
3x  1x  3x 

**Kearsney Court, Alkham
Road, Temple Ewell,
Dover, Kent, CT16**

Wards
Helping you move forwards

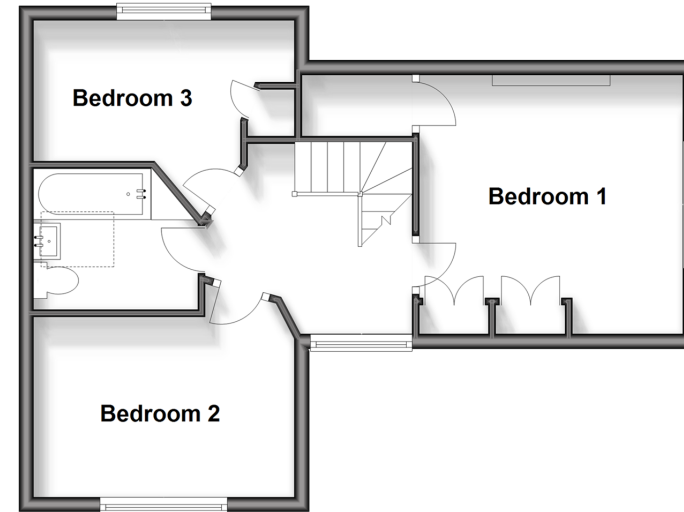
Ground Floor

Approx. 62.8 sq. metres (675.6 sq. feet)



First Floor

Approx. 42.6 sq. metres (458.7 sq. feet)



Accommodation

GROUND FLOOR

Entrance Porch
Entrance Hallway
Lounge : 15'7 x 11'9 (4.75m x 3.58m)
Dining Room : 16'4 x 11'7 (4.98m x 3.53m)
Kitchen: 12'1 x 9'2 (3.69m x 2.80m)
Downstairs W.C.
Store Room
Sun Room : 12'8 x 9'4 (3.86m x 2.85m)

FIRST FLOOR

Landing
Bathroom
Bedroom 3 : 11'8 x 6'4 (3.56m x 1.93m)
Bedroom 2 : 11'3 x 8'2 (3.43m x 2.49m)
Bedroom 1 : 11'9 x 11'4 (3.58m x 3.46m)

OUTSIDE

Front Garden
Rear Garden
Shed & Out buildings
Off Road Parking
Garage With Electric Door



Main features

- Period house in sought after private road
- Extensive well maintained garden
- Views looking over Kearsney Abbey
- Sits within Grade II listed English Heritage Grounds
- Great transport access to Dover, Folkestone and Canterbury



Nearest Schools

Primary Schools: Temple Ewell C of E Primary 0.2 miles, River Primary 0.4 miles, Whitfield and Aspen School 1.2 miles
Secondary Schools: Dover Christchurch Academy 1.4 miles, Dover Grammar School for Boys 1.7 miles



Transport Information

Train Stations: Kearsney 0.4 miles, Dover Priory 3.2 miles, Shepherdswell 5.3 miles



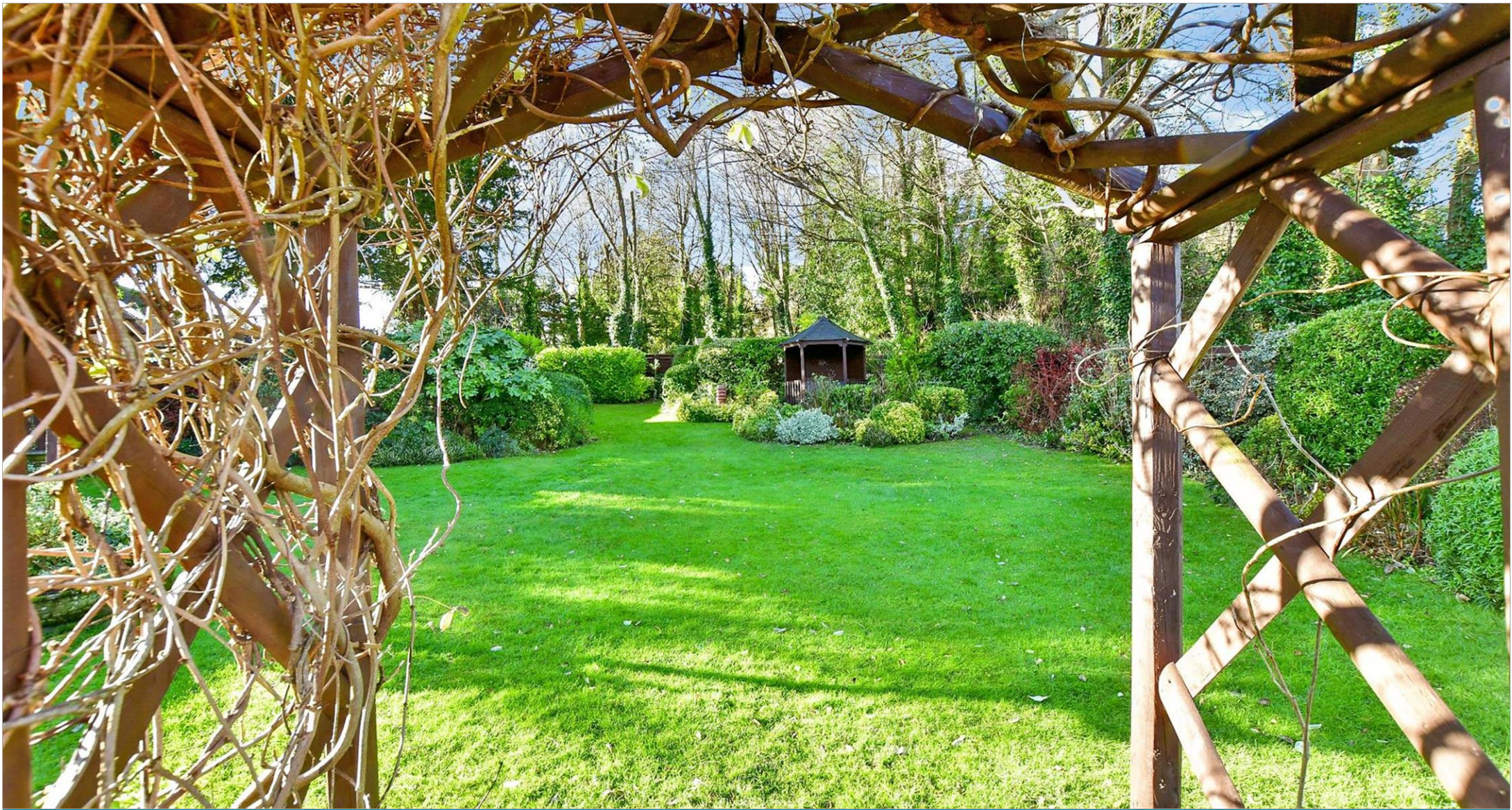
Address

Kearsney Court, Alkham Road, Temple Ewell, Dover, Kent, CT16



Directions

For directions to this property please contact us.



Call Dover Branch 01304 214876 ■ wardsofkent.co.uk



■ Legal advice should be taken to verify fixtures/fittings, planning, alterations and/or lease details ■ Appliances & services are untested, dimensions are approximate and floor plans are not to scale
■ Through a Homewise Home For Life Plan people aged 60+ can secure this property for up to 59% less, by purchasing a Lifetime Lease.



10735375/20240130/CB/CB