



Guide Price
£230,000

Freehold

3x  1x  2x 

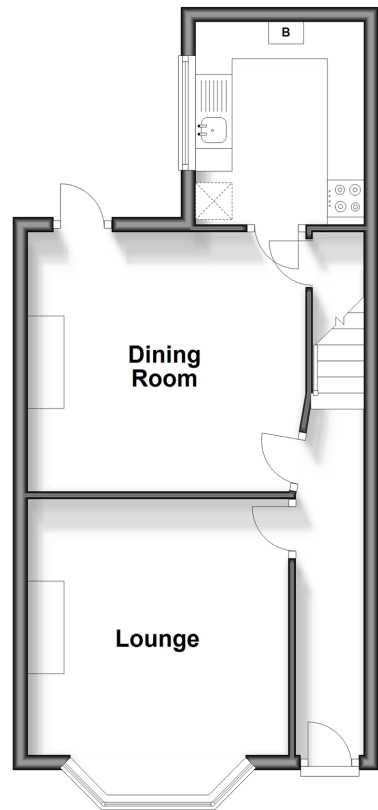
**Longfield Road, Dover,
Kent, CT17**

OVER 60?

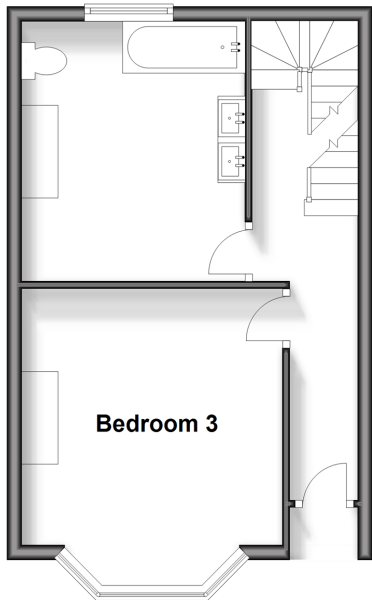
Secure this property
for up to **59% less!**

Wards
Helping you move forwards

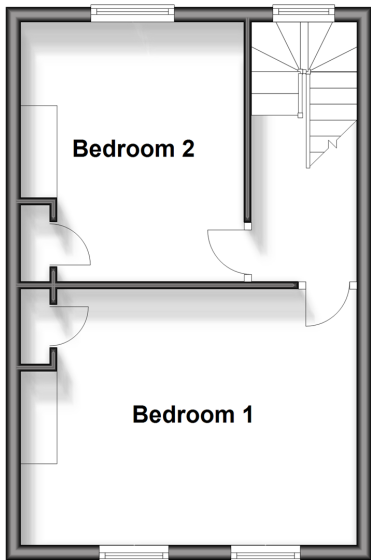
Split Level Lower Ground Floor
Approx. 39.5 sq. metres (425.2 sq. feet)



First Floor
Approx. 32.3 sq. metres (347.9 sq. feet)



Second Floor
Approx. 32.6 sq. metres (350.7 sq. feet)



Accommodation

SPLIT LEVEL GROUND FLOOR

Entrance Hallway
Lounge : 13'4 x 11'8 (4.07m x 3.56m)
Dining Room : 12'5 x 11'6 (3.79m x 3.51m)
Kitchen: 8'9 x 7'8 (2.67m x 2.34m)

FIRST FLOOR

Landing
Bathroom
Bedroom 3: 13'6 x 11'8 (4.12m x 3.56m)

SECOND FLOOR

Landing
Bedroom 2 : 11'7 x 10'2 (3.53m x 3.10m)
Bedroom 1 : 13'7 x 11'5 (4.14m x 3.48m)

OUTSIDE
Rear Garden



Main features

- Ideal for first time buyers or investors
- Castle views as well as views over Dover
- Well maintained garden, perfect for children or pets
- Close to town centre and schools
- Walking distance to Dover Priory railway station with its fast links to London



Nearest Schools

Primary Schools: Vale View Community School 0.2 miles, St Martin's School 0.5 miles, Priory Fields School 0.7 miles
Secondary Schools: Astor College for the Arts 0.5 miles, Dover Grammar School for Boys 0.7 miles, Dover College 0.8 miles



Transport Information

Train Stations: Dover Priory 0.6 miles, Kearsney 3.0 miles, Martin Mill 5.4 miles



Address

Longfield Road, Dover, Kent, CT17



Directions

For directions to this property please contact us.



Call Dover Branch 01304 214876 ■ wardsofkent.co.uk



- Legal advice should be taken to verify fixtures/fittings, planning, alterations and/or lease details
- Appliances & services are untested, dimensions are approximate and floor plans are not to scale
- Through a Homewise Home For Life Plan people aged 60+ can secure this property for up to 59% less, by purchasing a Lifetime Lease.



10735377/20240425/GH/GH