



Guide Price
£160,000

Freehold

2x  1x  1x 

**Tower Hamlets Street,
Dover, Kent, CT17**

OVER 60?

Secure this property
for up to **59% less!**

Wards
Helping you move forwards



Main features

- Wonderful house set in the heart of Dover
- Ideal first time buy or buy to let investment
- Low maintenance courtyard rear garden
- Close proximity to local primary and secondary schools
- Short walk to Dover Priory station

Accommodation

GROUND FLOOR

Lounge : 11'11 x 10'0 (3.63m x 3.05m)
 Dining Area: 11'11 x 8'4 (3.63m x 2.54m)
 Galley Kitchen : 9'5 x 4'11 (2.87m x 1.50m)
 Shower Room

FIRST FLOOR

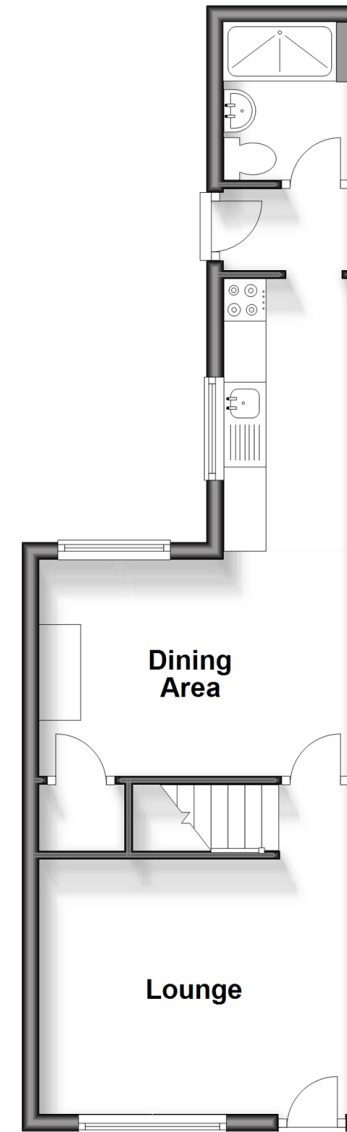
Landing
 Bedroom 1 : 11'11 x 10'0 (3.63m x 3.05m)
 Bedroom 2 : 11'11 x 8'7 (3.63m x 2.62m)

OUTSIDE

Rear Courtyard Garden

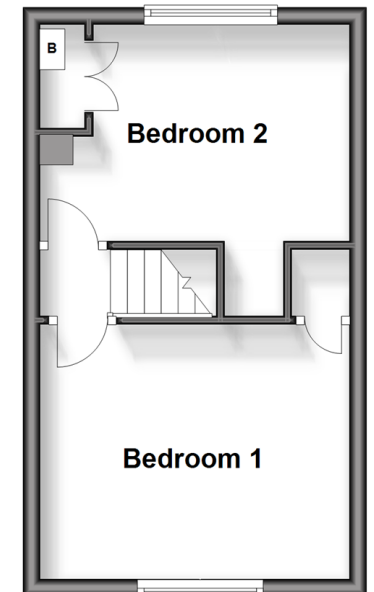
Ground Floor

Approx. 33.5 sq. metres (360.9 sq. feet)



First Floor

Approx. 24.1 sq. metres (259.6 sq. feet)



Call Dover - 01304 214876 ■ wardsofKent.co.uk

- Legal advice should be taken to verify fixtures/fittings, planning, alterations and/or lease details
- Appliances & services are untested, dimensions are approximate and floor plans are not to scale
- Through a Homewise Home For Life Plan people aged 60+ can secure this property for up to 59% less, by purchasing a Lifetime Lease.