



Price
£280,000

Freehold

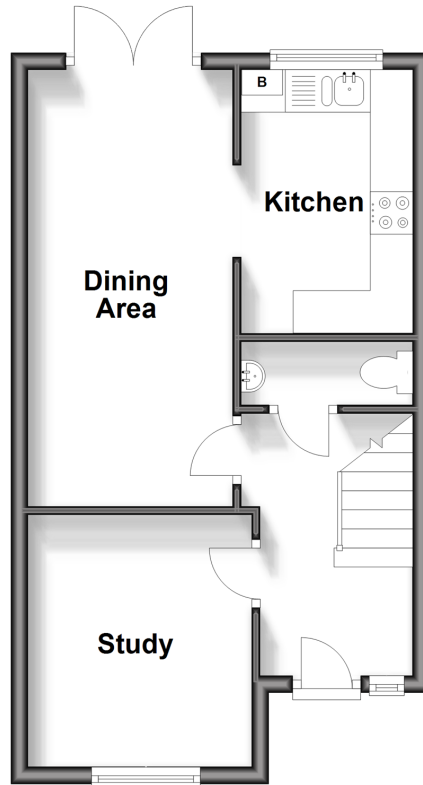
4x  2x  2x 

**Aspen Drive, Whitfield,
Dover, Kent, CT16**

Wards
Helping you move forwards

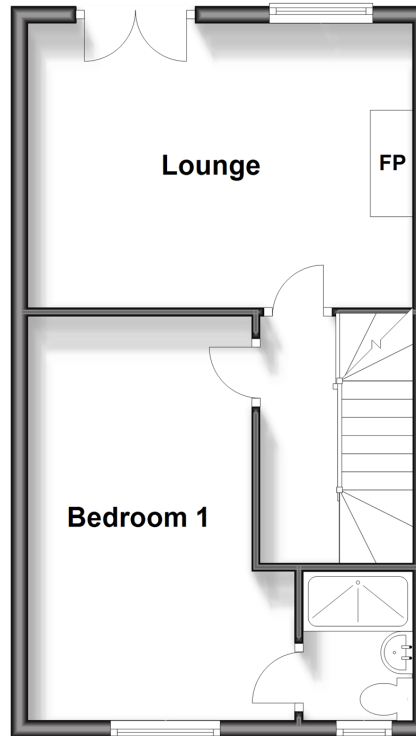
Ground Floor

Approx. 35.1 sq. metres (377.6 sq. feet)



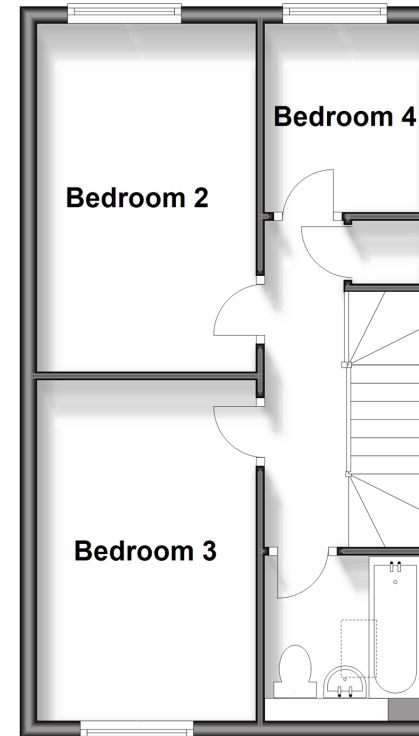
First Floor

Approx. 37.1 sq. metres (399.5 sq. feet)



Second Floor

Approx. 37.1 sq. metres (399.5 sq. feet)



Accommodation

GROUND FLOOR

Entrance Hallway

Study : 9'9 x 8'5 (2.97m x 2.57m)

Downstairs Cloakroom

Dining Area : 16'9 x 7'9 (5.11m x 2.36m)

Kitchen : 10'0 x 6'7 (3.05m x 2.01m)

FIRST FLOOR

Landing

Lounge : 15'0 x 10'1 (4.58m x 3.08m)

Bedroom 1: 16'5 x 8'4 (5.01m x 2.54m)

En-Suite Shower Room

SECOND FLOOR

Landing

Bedroom 4 : 7'2 x 6'6 (2.19m x 1.98m)

Bedroom 3 : 13'4 x 8'9 (4.07m x 2.67m)

Bedroom 2 : 13'5 x 8'4 (4.09m x 2.54m)

Bathroom : 6'7 x 6'4 (2.01m x 1.93m)

OUTSIDE

Front Garden

Rear Garden

Garage & Off Road Parking



Main features

- Located in the sought after area of Whitfield
- Garage & off road parking
- Ideal family home
- En-suite to main bedroom & downstairs cloakroom
- No onward chain complications, meaning this could be your home sooner than you may think
- Please note: This property has an management company annual charge



Nearest Schools

Primary Schools: Whitfield and Aspen School 0.9 miles, Guston C of E Primary 1.2 miles, White Cliffs Primary College for the Arts 1.2 miles
Secondary Schools: Dover Christchurch Academy 0.3 miles, Dover Grammar School for Girls 2.0 miles.



Transport Information

Train Stations: Kearsney 1.6 miles, Martin Mill 4.9 miles, Dover Priory 5.2 miles



Address

Aspen Drive, Whitfield, Dover, Kent, CT16



Directions

For directions to this property please contact us.



Wards
Helping you move forwards

Call Dover Branch 01304 214876 ■ wardsofkent.co.uk



■ Legal advice should be taken to verify fixtures/fittings, planning, alterations and/or lease details ■ Appliances & services are untested, dimensions are approximate and floor plans are not to scale



10735385/20240111/TE/OV