



Price

£61,250

Leasehold

2x  1x  1x 

**Antelope Close, Dover,
Kent, CT16**

Wards
Helping you move forwards



Main features

- Beautiful first floor flat in sought after location
- Shared ownership property, with a minimum of 35% purchase
- Allocated parking space
- Great access to Canterbury and Deal
- Beautifully presented throughout
- Ideal first time buy

Accommodation

FIRST FLOOR

Entrance Hallway

Family Bathroom

Bedroom 1 : 11'10 x 10'0 (3.61m x 3.05m)

Bedroom 2 : 11'10 x 7'7 (3.61m x 2.31m)

Kitchen/Diner/Lounge : 23'8 x 15'1 (7.22m x 4.60m)

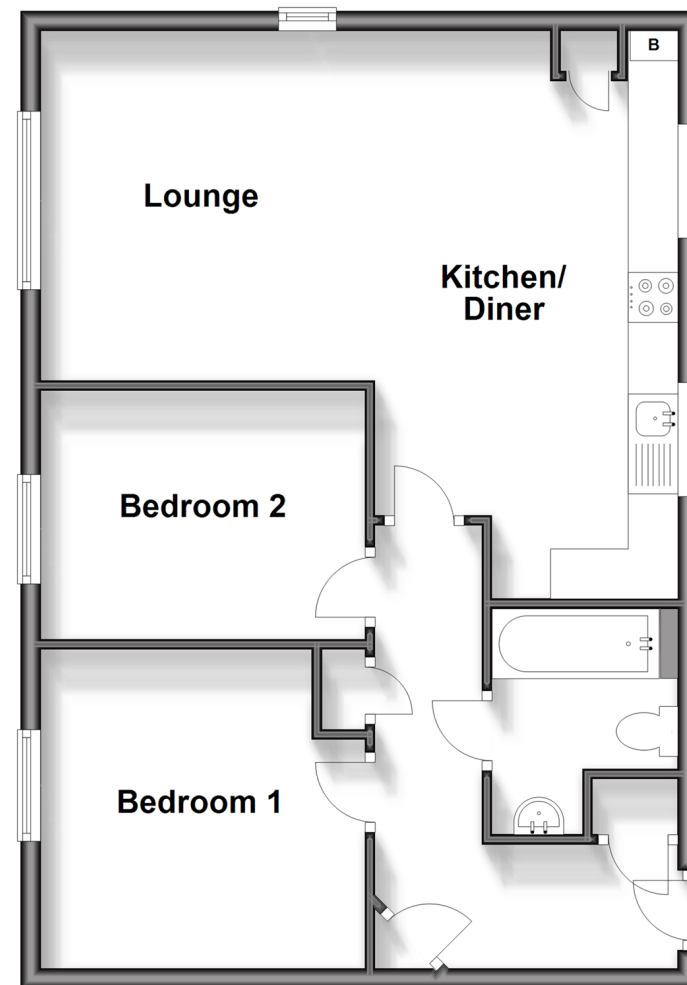
OUTSIDE

Communal Gardens

Allocated Parking

First Floor

Approx. 60.1 sq. metres (647.2 sq. feet)



Call Dover - 01304 214876 ■ wardsofkent.co.uk

- Legal advice should be taken to verify fixtures/fittings, planning, alterations and/or lease details
- Appliances & services are untested, dimensions are approximate and floor plans are not to scale



10735393/20240107/TE/GM