



OVER 60?

Secure this property
for up to **59% less!**

Price

£190,000

**Share of
Freehold**

2x  1x  1x 

**Charter House, Camden
Crescent, Dover, Kent,
CT16**

Wards
Helping you move forwards



Main features

- Spacious chain free period lower ground floor apartment
- Recently refurbished throughout and benefits from a share of freehold, ground rent 0
- Outside storage space
- Close to Dover seafront and restaurants
- Close to Dover railway station

Accommodation

LOWER GROUND FLOOR

Entrance Hallway

Lounge/Diner : 18'9 x 16'2 (5.72m x 4.93m)

Kitchen : 9'8 x 6'1 (2.95m x 1.86m)

Bedroom 2 : 12'4 x 12'1 (3.76m x 3.69m)

Bedroom 1 : 12'1 x 12'0 (3.69m x 3.66m)

Shower Room

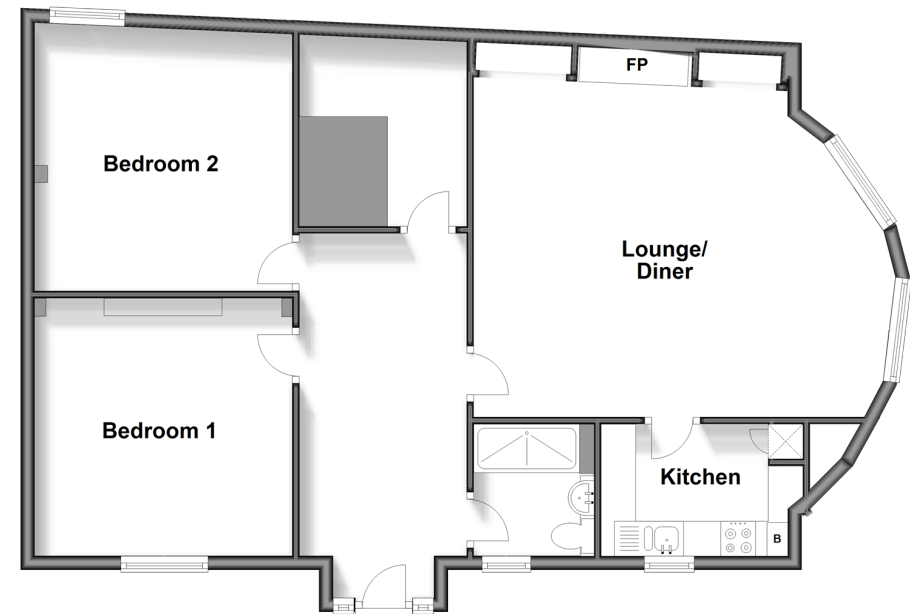
OUTSIDE

Rear Courtyard Garden

Outside Store Room

Lower Ground Floor

Approx. 87.7 sq. metres (944.5 sq. feet)



Call Dover - 01304 214876 ■ wardsofkent.co.uk

- Legal advice should be taken to verify fixtures/fittings, planning, alterations and/or lease details
- Appliances & services are untested, dimensions are approximate and floor plans are not to scale
- Through a Homewise Home For Life Plan people aged 60+ can secure this property for up to 59% less, by purchasing a Lifetime Lease.



10735398/20240126/TE/CB