



**Price**

**£289,950**

**Freehold**

2x  1x  1x 

**Castle Drive, Whitfield,  
Dover, Kent, CT16**

*Wards*  
Helping you move forwards





## Main features

- Sought after village of Whitfield
- Beautifully presented
- Garage and off road parking
- Easy access to A256 and M2, making commuting a breeze
- Close to schools and supermarket as well as close to post office

## Accommodation

### GROUND FLOOR

Entrance Hallway

Lounge : 17'4 x 10'9 (5.29m x 3.28m)

Kitchen : 10'8 x 9'2 (3.25m x 2.80m)

Bedroom 1 : 13'4 x 10'8 (4.07m x 3.25m)

Bedroom 2 : 11'2 x 9'3 (3.41m x 2.82m)

Bathroom : 5'8 x 5'5 (1.73m x 1.65m)

### OUTSIDE

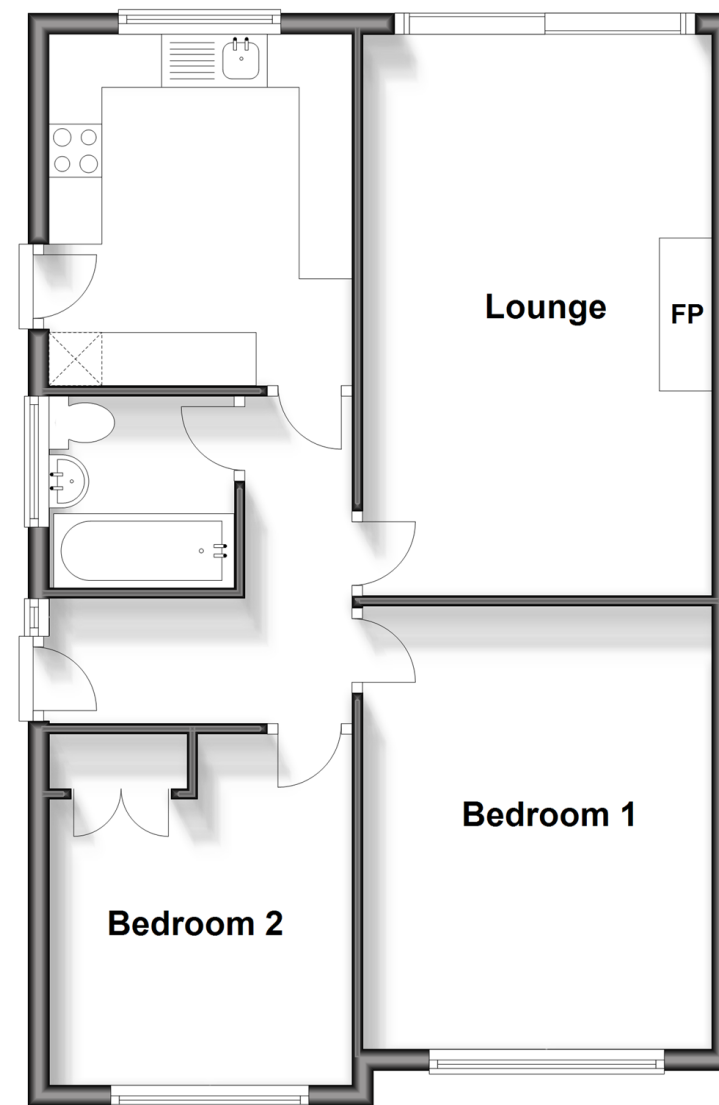
Front Garden

Rear Garden

Garage & Off Road Parking

## Ground Floor

Approx. 61.0 sq. metres (656.7 sq. feet)



**Call Dover - 01304 214876 ■ [wardsofKent.co.uk](http://wardsofKent.co.uk)**

- Legal advice should be taken to verify fixtures/fittings, planning, alterations and/or lease details
- Appliances & services are untested, dimensions are approximate and floor plans are not to scale

