



Price
£430,000

Freehold

4x  1x  2x 

**Arable Drive, Whitfield,
Dover, Kent, CT16**

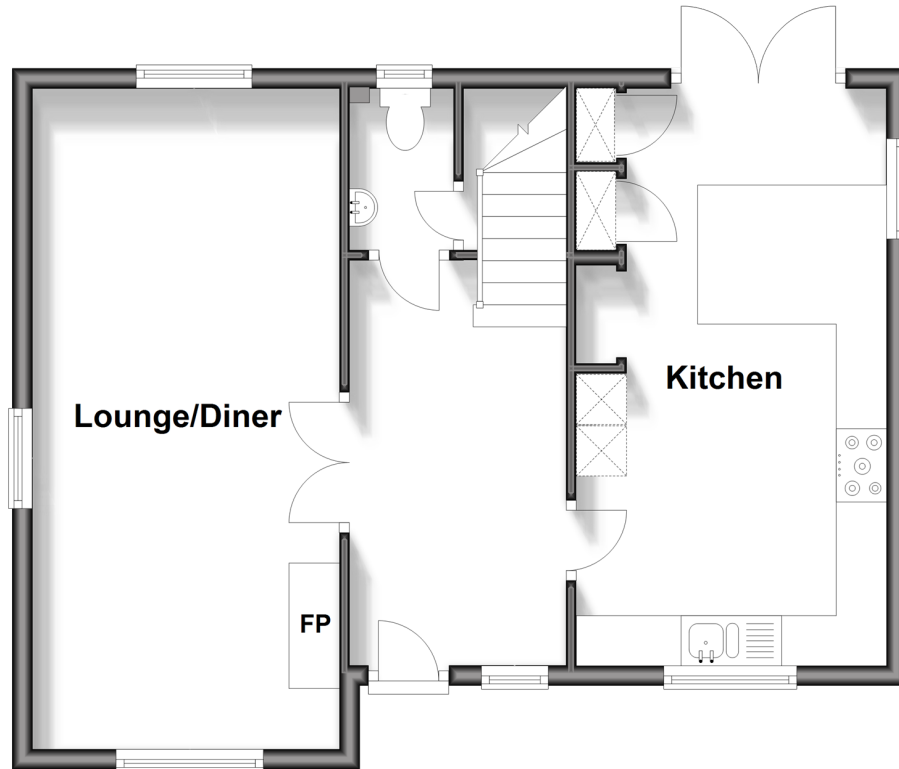
OVER 60?

Secure this property
for up to **59% less!**

Wards
Helping you move forwards

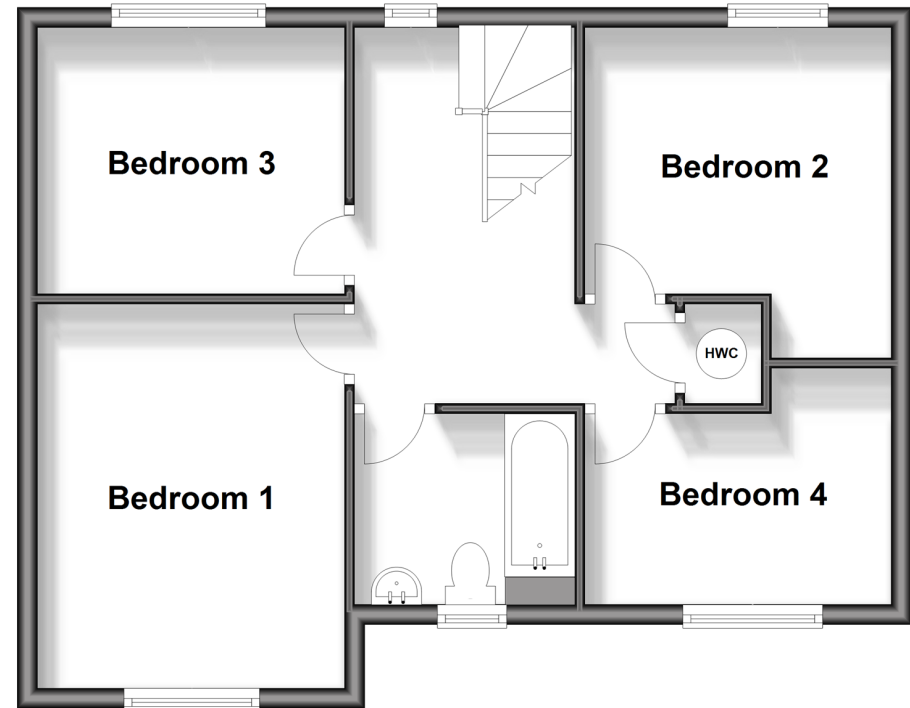
Ground Floor

Approx. 51.5 sq. metres (554.2 sq. feet)



First Floor

Approx. 51.5 sq. metres (554.2 sq. feet)



Accommodation

GROUND FLOOR

Entrance Hallway

Lounge/Diner : 21'5 x 10'0 (6.53m x 3.05m)

Downstairs Cloakroom

Kitchen : 19'3 x 10'0 (5.87m x 3.05m)

FIRST FLOOR

Landing

Bedroom 3 : 10'0 x 8'5 (3.05m x 2.57m)

Bedroom 1 : 12'7 x 10'0 (3.84m x 3.05m)

Bathroom

Bedroom 4 : 10'2 x 7'4 (3.10m x 2.24m)

Bedroom 2 : 10'9 x 10'2 (3.28m x 3.10m)

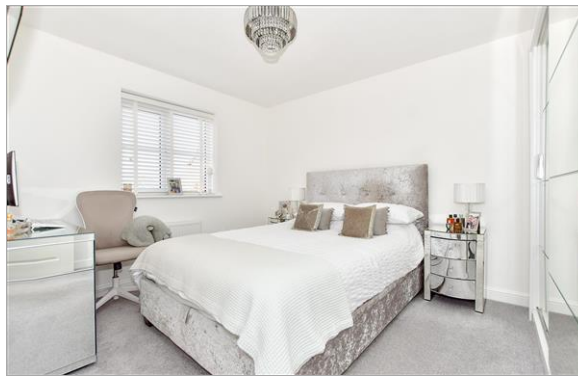
OUTSIDE

Front Garden

Rear Garden

Carport

Off Road Parking



Main features

- Ideal property for a family
- Carport & off-road parking for 3 vehicles
- Immaculately presented throughout to a high standard
- Large corner plot with a good size rear garden
- Sought after location of Whitfield, close to local shops and amenities



Nearest Schools

Primary Schools: Whitfield and Aspen School 0.5 miles, River Primary 2.1 miles, Temple Ewell C of E Primary 2.1 miles
Secondary Schools: Dover Christchurch Academy 1.2 miles, Dover Grammar School for Girls 3.0 miles.



Transport Information

Train Stations: Kearsney 1.7 miles, Shepherdswell 4.6 miles, Walmer 4.7 miles



Address

Arable Drive, Whitfield, Dover, Kent, CT16



Directions

For directions to this property please contact us.



Wards
Helping you move forwards

Call Dover Branch 01304 214876 ■ wardsofkent.co.uk



■ Legal advice should be taken to verify fixtures/fittings, planning, alterations and/or lease details ■ Appliances & services are untested, dimensions are approximate and floor plans are not to scale
■ Through a Homewise Home For Life Plan people aged 60+ can secure this property for up to 59% less, by purchasing a Lifetime Lease.



10735414/20240203/TE/CB