



**Guide Price**  
**£190,000**

**Freehold**

2x  1x  1x 

**Dour Street, Dover,**  
**Kent, CT16**

**OVER 60?**

Secure this property  
for up to **59% less!**

*Wards*  
Helping you move forwards





## Main features

- Ideal first time purchase or buy to let opportunity
- Period terrace house with bathroom upstairs
- On the flat in Dover town
- Walking distance to the town centre and Dover Marina
- Low maintenance courtyard rear garden

## Accommodation

### GROUND FLOOR

Entrance Hallway

Lounge : 11'11 x 11'3 (3.63m x 3.43m)

Dining Area : 14'9 x 11'11 (4.50m x 3.63m)

Kitchen : 9'2 x 7'8 (2.80m x 2.34m)

### SPLIT LEVEL FIRST FLOOR

Landing

Bedroom 1 : 14'9 x 11'5 (4.50m x 3.48m)

Bedroom 2 : 11'6 x 9'8 (3.51m x 2.95m)

Bathroom

### OUTSIDE

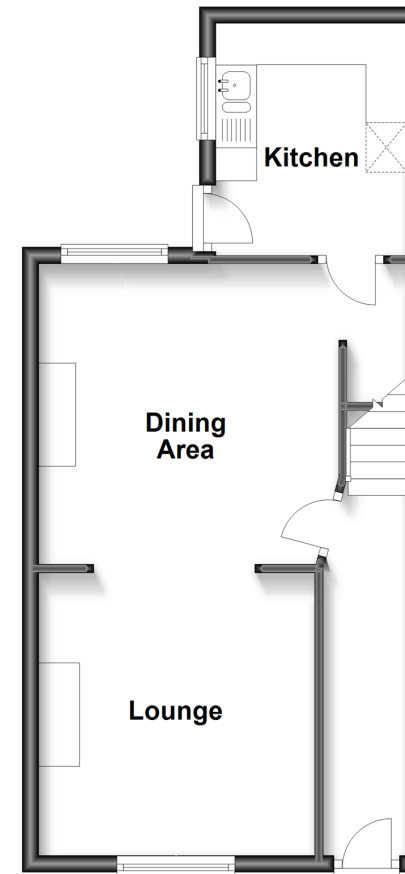
Front Garden

Rear Garden

Shed

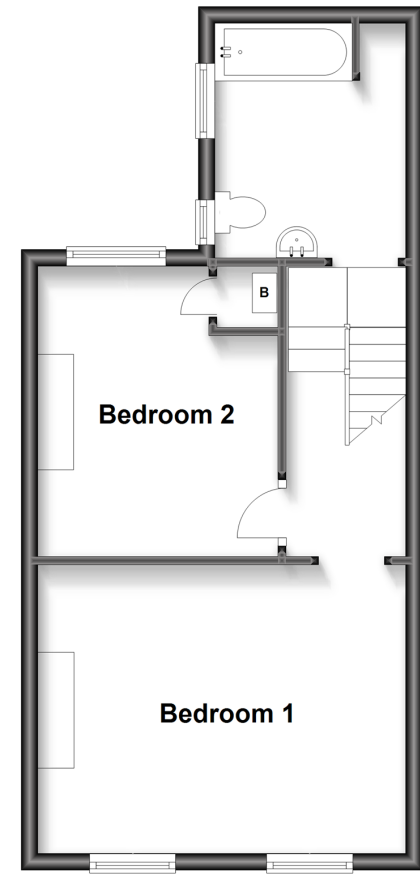
### Split Level Ground Floor

Approx. 39.0 sq. metres (419.6 sq. feet)



### Split Level First Floor

Approx. 38.8 sq. metres (417.8 sq. feet)



**Call Dover - 01304 214876 ■ [wardsofKent.co.uk](http://wardsofKent.co.uk)**

- Legal advice should be taken to verify fixtures/fittings, planning, alterations and/or lease details
- Appliances & services are untested, dimensions are approximate and floor plans are not to scale
- Through a Homewise Home For Life Plan people aged 60+ can secure this property for up to 59% less, by purchasing a Lifetime Lease.



10735418/20240409/GH/OV