



Price
£425,000

Freehold

2x  1x  2x 

**Mayfield Road,
Whitfield, Dover, Kent,
CT16**

OVER 60?

Secure this property
for up to **59% less!**

Wards
Helping you move forwards



Main features

- Sought after village of Whitfield
- Close to shop and post office as well as bus route
- Large rear garden, ideal if you are a keen gardener
- Dual off street parking, with room for cars as well as camper van & garage
- Whitfield has excellent road links

Accommodation

GROUND FLOOR

Entrance Hallway

Lounge : 17'3 x 9'9 (5.26m x 2.97m)

Dining Area : 9'4 x 8'2 (2.85m x 2.49m)

Conservatory : 10'2 x 9'1 (3.10m x 2.77m)

Kitchen: 12'2 x 7'7 (3.71m x 2.31m)

Bedroom 1 : 11'8 x 10'9 (3.56m x 3.28m)

Shower Room: 6'3 x 5'4 (1.91m x 1.63m)

Bedroom 2 : 10'9 x 10'9 (3.28m x 3.28m)

OUTSIDE

Front Garden

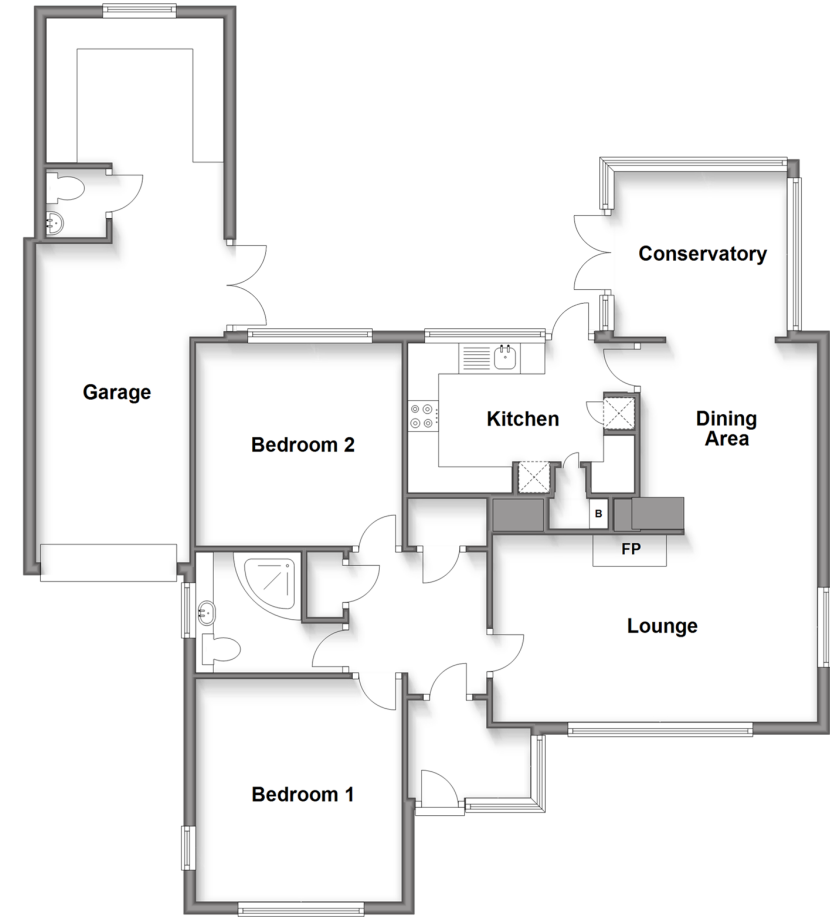
Rear Garden

Garage With Hobby Area

Plenty Of Parking

Summer House

Ground Floor
Approx. 106.9 sq. metres (1150.8 sq. feet)



Call Dover - 01304 214876 ■ wardsofkent.co.uk

- Legal advice should be taken to verify fixtures/fittings, planning, alterations and/or lease details
- Appliances & services are untested, dimensions are approximate and floor plans are not to scale
- Through a Homewise Home For Life Plan people aged 60+ can secure this property for up to 59% less, by purchasing a Lifetime Lease.



10735420/20240208/TE/OV