



OVER 60?

Secure this property
for up to **59% less!**

Price

£160,000

Leasehold

2x  1x  1x 

**Dickson Road, Dover,
Kent, CT17**

Wards
Helping you move forwards

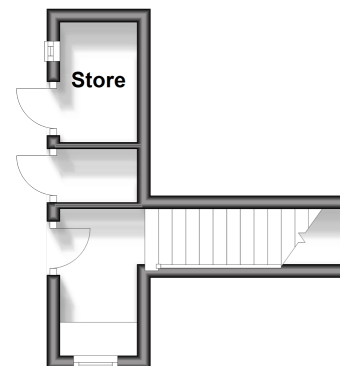


Main features

- Purpose built first floor maisonette
- Private rear garden with storage shed
- Large rooms with a separate kitchen, ideal for cooking
- No onward chain complications
- Central location within walking distance to Dover town as well as high speed rail link to London

Ground Floor

Approx. 8.3 sq. metres (89.7 sq. feet)



Accommodation

FIRST FLOOR

Entrance Hallway

Kitchen : 11'5 x 9'5 (3.48m x 2.87m)

Lounge : 16'7 x 13'2 (5.06m x 4.02m)

Bedroom 1 : 11'8 x 9'7 (3.56m x 2.92m)

Bedroom 2 : 11'2 x 9'7 (3.41m x 2.92m)

Bathroom : 7'1 x 5'4 (2.16m x 1.63m)

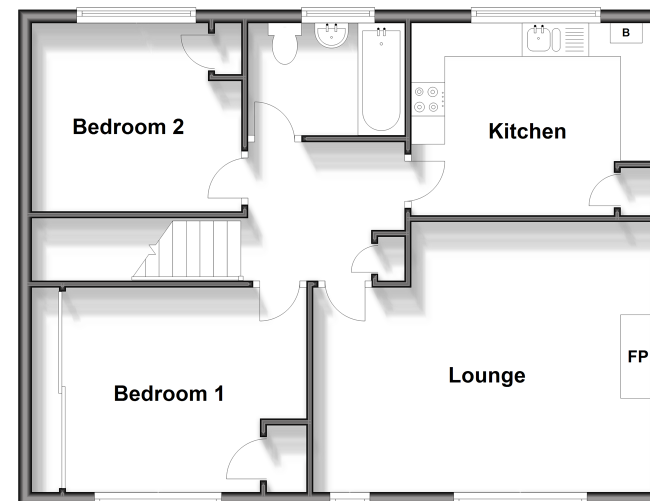
OUTSIDE

Rear Garden

Outside Store

First Floor

Approx. 65.4 sq. metres (704.5 sq. feet)



Call Dover - 01304 214876 ■ wardsofkent.co.uk

- Legal advice should be taken to verify fixtures/fittings, planning, alterations and/or lease details
- Appliances & services are untested, dimensions are approximate and floor plans are not to scale
- Through a Homewise Home For Life Plan people aged 60+ can secure this property for up to 59% less, by purchasing a Lifetime Lease.



10735422/20240428/TE/OV