



OVER 60?

Secure this property
for up to **59% less!**

Guide Price
£150,000

Leasehold

2x  1x  1x 

**Chalkwell Court, Eaves
Road, Dover, Kent, CT17**

Wards
Helping you move forwards



Main features

- Beautiful first floor apartment in a sought-after location
- Residents parking, first come, first serve
- No onward chain complications
- Set in the sought after Elms Vale area of Dover
- Ideal first time buy or buy to let investment

Accommodation

FIRST FLOOR

Entrance Hallway

Bedroom 2 : 10'4 x 8'2 (3.15m x 2.49m)

Bedroom 1 : 12'0 x 10'4 (3.66m x 3.15m)

Lounge : 15'4 x 10'4 (4.68m x 3.15m)

Kitchen : 10'3 x 8'6 (3.13m x 2.59m)

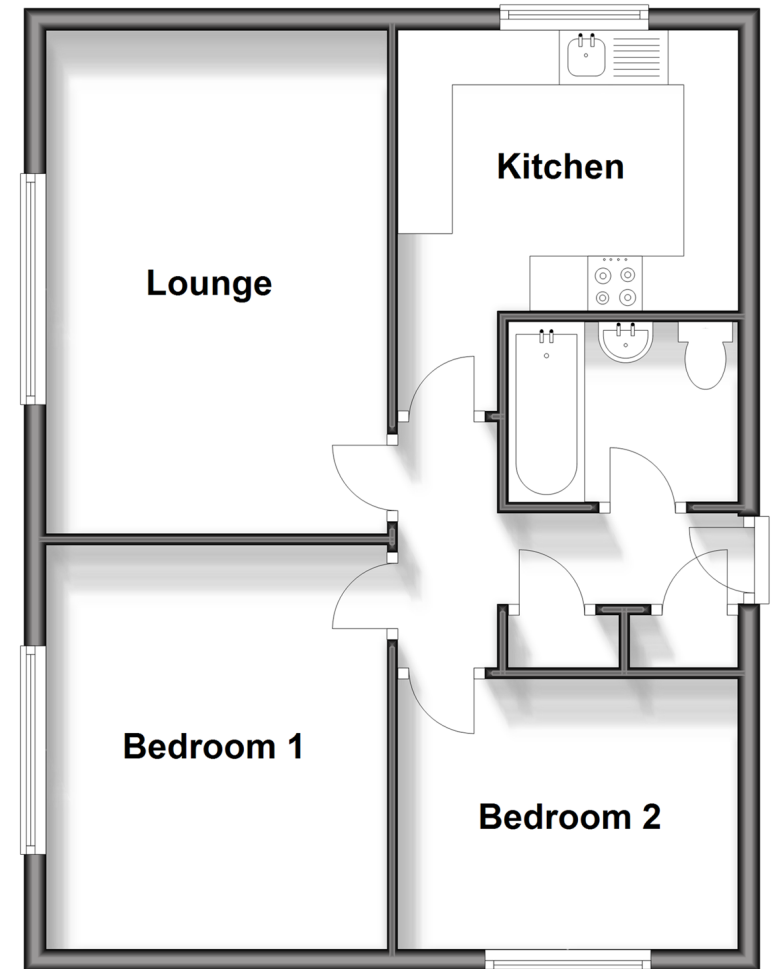
Bathroom

OUTSIDE

Residents Parking

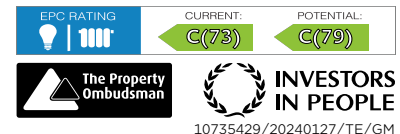
First Floor

Approx. 53.5 sq. metres (576.3 sq. feet)



Call Dover - 01304 214876 ■ wardsofkent.co.uk

- Legal advice should be taken to verify fixtures/fittings, planning, alterations and/or lease details
- Appliances & services are untested, dimensions are approximate and floor plans are not to scale
- Through a Homewise Home For Life Plan people aged 60+ can secure this property for up to 59% less, by purchasing a Lifetime Lease.



10735429/20240127/TE/GM