



**Guide Price**  
**£300,000**

**Freehold**

4x  2x  2x 

**Aspen Drive, Whitfield,  
Dover, Kent, CT16**

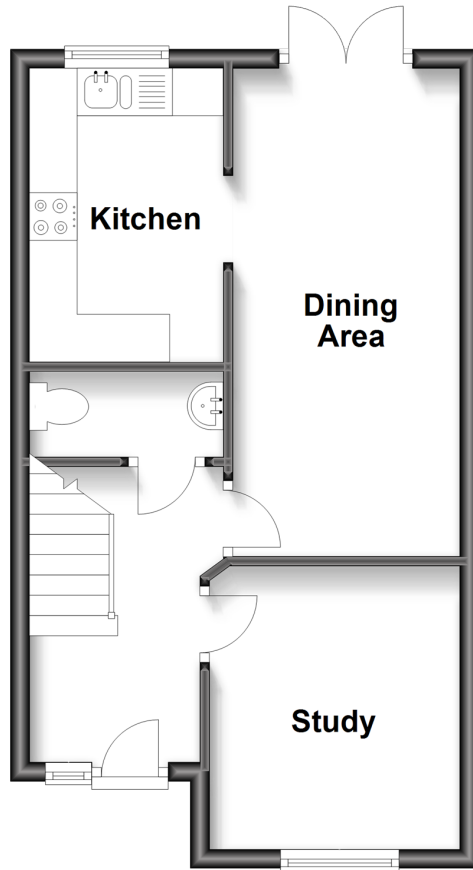
**OVER 60?**

Secure this property  
for up to **59% less!**

**Wards**  
Helping you move forwards

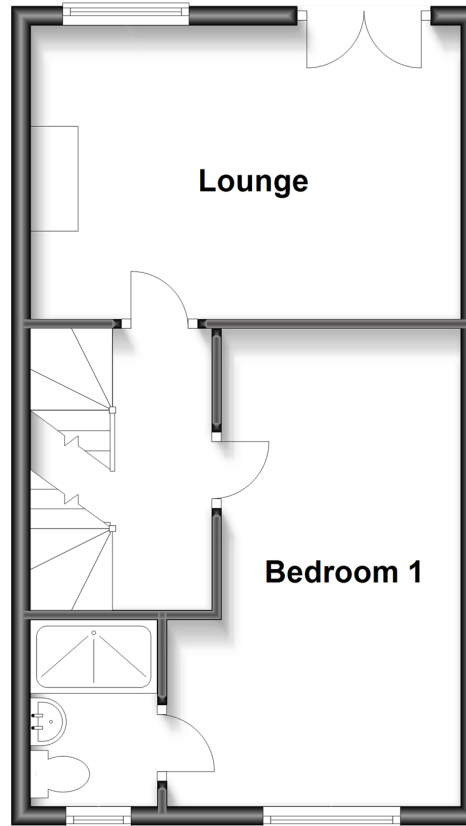
## Ground Floor

Approx. 35.4 sq. metres (380.7 sq. feet)



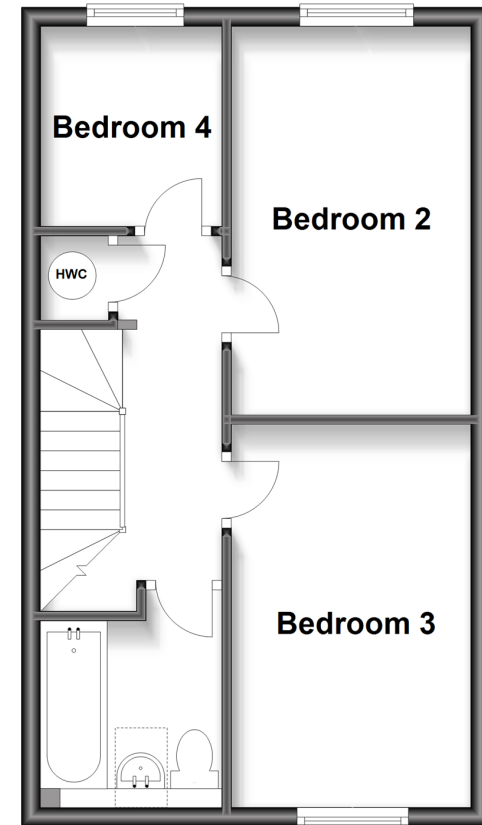
## First Floor

Approx. 37.1 sq. metres (399.3 sq. feet)



## Second Floor

Approx. 37.1 sq. metres (399.3 sq. feet)



## Accommodation

### GROUND FLOOR

Entrance Hallway  
Study : 9'9 x 8'6 (2.97m x 2.59m)  
Dining Area : 17'5 x 7'9 (5.31m x 2.36m)  
Kitchen : 10'0 x 6'8 (3.05m x 2.03m)  
Downstairs Cloakroom

### FIRST FLOOR

Landing  
Lounge : 15'4 x 10'2 (4.68m x 3.10m)  
Bedroom 1 : 17'0 x 7'8 (5.19m x 2.34m)  
En-Suite Shower Room

### SECOND FLOOR

Landing  
Bedroom 2 : 13'6 x 8'5 (4.12m x 2.57m)  
Bedroom 3 : 13'5 x 8'4 (4.09m x 2.54m)  
Bedroom 4 : 7'3 x 6'5 (2.21m x 1.96m)  
Family Bathroom

### OUTSIDE

Rear Garden  
Off Road Parking  
Garage





## Main features

- Large end of terrace house, set in a sought after location
- No onward chain complications
- Perfect house for a growing family
- Low maintenance enclosed rear garden, ideal for children or pets
- Ample off road and parking, ideal for when the guests descend



### Nearest Schools

Primary Schools: Whitfield and Aspen School 0.9 miles, Guston C of E Primary 1.2 miles, White Cliffs Primary College for the Arts 1.2 miles  
Secondary Schools: Dover Christchurch Academy 0.3 miles, Dover Grammar School for Girls 2.0 miles.



### Transport Information

Train Stations: Kearsney 1.6 miles, Martin Mill 4.9 miles, Dover Priory 5.2 miles



### Address

Aspen Drive, Whitfield, Dover, Kent, CT16



### Directions

For directions to this property please contact us.





Call Dover Branch 01304 214876 ■ [wardsofkent.co.uk](https://wardsofkent.co.uk)



- Legal advice should be taken to verify fixtures/fittings, planning, alterations and/or lease details
- Appliances & services are untested, dimensions are approximate and floor plans are not to scale
- Through a Homewise Home For Life Plan people aged 60+ can secure this property for up to 59% less, by purchasing a Lifetime Lease.



10735437/20240219/TE/GM