



**Guide Price**  
**£300,000**

**Freehold**

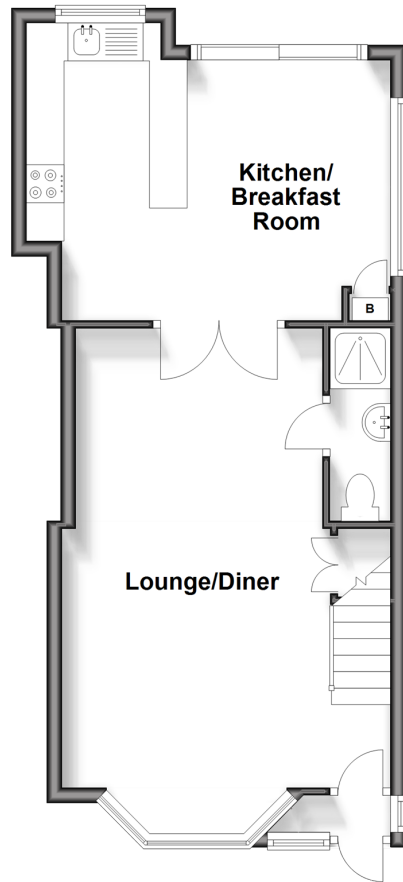
3x  2x  1x 

**Nursery Lane, Whitfield,  
Dover, Kent, CT16**

*Wards*  
Helping you move forwards

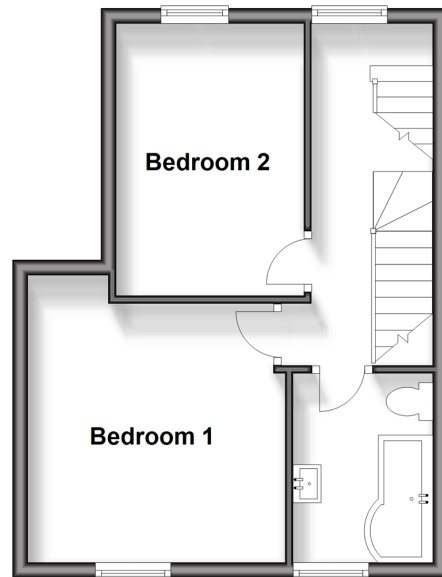
## Ground Floor

Approx. 44.5 sq. metres (479.0 sq. feet)



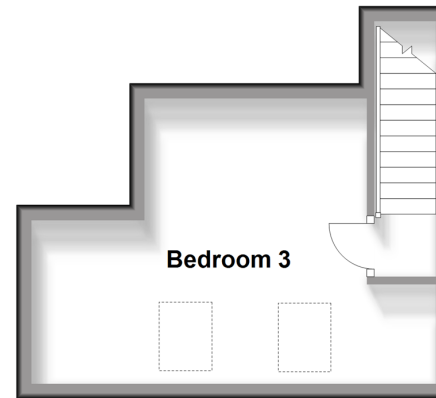
## First Floor

Approx. 34.3 sq. metres (368.8 sq. feet)



## Second Floor

Approx. 18.6 sq. metres (200.3 sq. feet)



## Accommodation

### GROUND FLOOR

Entrance Porch  
Lounge/Diner : 22'9 x 10'8 (6.94m x 3.25m)  
Shower Room  
Kitchen/Breakfast Room : 15'9 x 11'2 (4.80m x 3.41m)

### FIRST FLOOR

Landing  
Family Bathroom : 8'2 x 6'4 (2.49m x 1.93m)  
Bedroom 1 : 12'4 x 11'2 (3.76m x 3.41m)  
Bedroom 2 : 11'9 x 7'10 (3.58m x 2.39m)

### SECOND FLOOR

Bedroom 3 : 14'6 x 12'1 (4.42m x 3.69m)

### OUTSIDE

Front Garden  
Rear Garden  
Summer House





## Main features

- Large period house
- Completely refurbished and ready to move straight into
- No onward chain complications
- Positioned in Whitfield village with post office, school, and supermarkets close by
- Ideal if you need to commute with easy access to road links



## Nearest Schools

Primary Schools: Whitfield and Aspen School 0.6 miles, White Cliffs Primary College for the Arts 2.0 miles, Langdon Primary 2.1 miles  
Secondary Schools: Dover Christchurch Academy 1.3 miles, Dover Grammar School for Girls 3.1 miles.

## Transport Information

Train Stations: Kearsney 1.8 miles, Shepherdswell 4.7 miles, Martin Mill 4.9 miles

## Address

Nursery Lane, Whitfield, Dover, Kent, CT16

## Directions

For directions to this property please contact us.







Call Dover Branch 01304 214876 ■ [wardsofkent.co.uk](https://wardsofkent.co.uk)



■ Legal advice should be taken to verify fixtures/fittings, planning, alterations and/or lease details ■ Appliances & services are untested, dimensions are approximate and floor plans are not to scale



10735441/20240330/TE/OV