



OVER 60?

Secure this property
for up to **59% less!**

Price

£190,000

Freehold

2x  1x  1x 

**London Road, River,
Kent, CT17**

Wards
Helping you move forwards



Main features

- No onward chain
- Period cottage with character features
- Ideal first time buy or buy to let investment
- Easily maintained garden with river at the bottom
- Walking distance to local shops and schools

Accommodation

GROUND FLOOR

Entrance Porch

Lounge/Diner : 21'0 x 11'0 (6.41m x 3.36m)

Kitchen : 10'0 x 9'0 (3.05m x 2.75m)

FIRST FLOOR

Landing

Bedroom 1 : 12'0 x 9'0 (3.66m x 2.75m)

Bedroom 2 : 9'0 x 8'0 (2.75m x 2.44m)

Bathroom

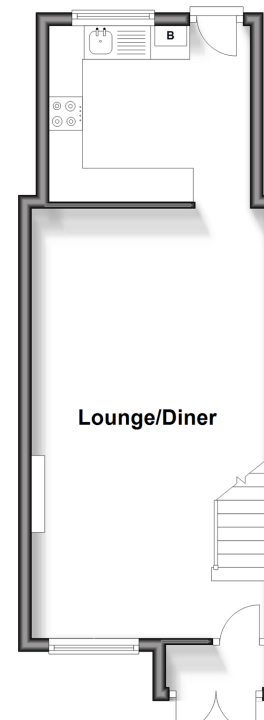
OUTSIDE

Front Garden

Rear Garden

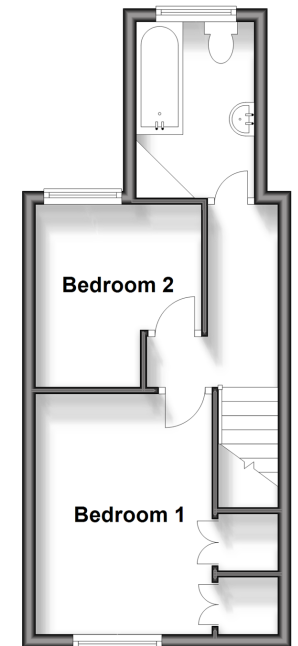
Ground Floor

Approx. 31.9 sq. metres (343.6 sq. feet)



First Floor

Approx. 28.2 sq. metres (303.4 sq. feet)



Call Dover - 01304 214876 ■ wardsofkent.co.uk

■ Legal advice should be taken to verify fixtures/fittings, planning, alterations and/or lease details
 ■ Through a Homewise Home For Life Plan people aged 60+ can secure this property for up to 59% less, by purchasing a Lifetime Lease.

■ Appliances & services are untested, dimensions are approximate and floor plans are not to scale