



Guide Price
£375,000

Freehold

4x  2x  1x 

**Newlands, Whitfield,
Dover, Kent, CT16**

OVER 60?

Secure this property
for up to **59% less!**

Wards
Helping you move forwards



Main features

- Large family house in sought after location
- Ideal home for a growing family
- Ample off-road parking, ideal for when guests descend
- Low maintenance enclosed rear garden, ideal for children or pets
- Great access to both Dover and Canterbury

Accommodation

GROUND FLOOR

Entrance Hallway

Kitchen : 10'11 x 8'6 (3.33m x 2.59m)

Dining Area : 17'6 x 9'5 (5.34m x 2.87m)

Lounge : 17'6 x 9'9 (5.34m x 2.97m)

FIRST FLOOR

Landing

Shower Room

Bedroom 1 : 11'10 x 11'6 (3.61m x 3.51m)

Bedroom 2 : 8'9 x 7'2 (2.67m x 2.19m)

Bedroom 3 : 8'7 x 7'9 (2.62m x 2.36m)

Bedroom 4 : 8'3 x 7'3 (2.52m x 2.21m)

Bathroom

OUTSIDE

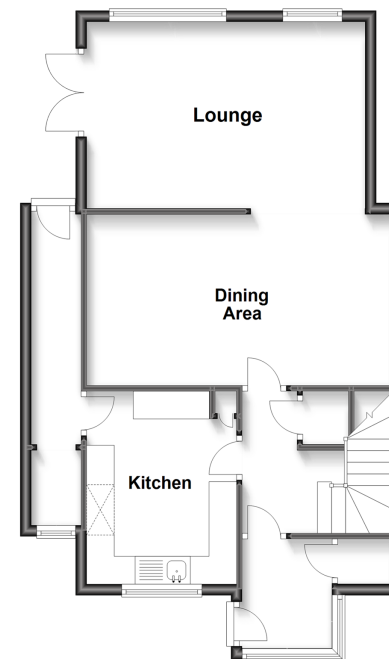
Front Garden

Rear Garden

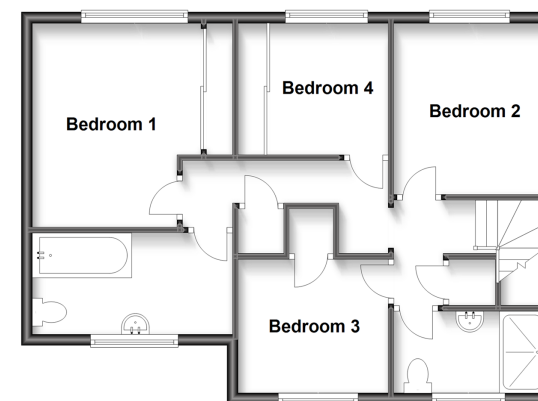
Off Road Parking

Integral Garage

Ground Floor
Approx. 62.0 sq. metres (666.8 sq. feet)



First Floor
Approx. 57.8 sq. metres (622.1 sq. feet)



Call Dover - 01304 214876 ■ wardsofKent.co.uk

- Legal advice should be taken to verify fixtures/fittings, planning, alterations and/or lease details
- Appliances & services are untested, dimensions are approximate and floor plans are not to scale
- Through a Homewise Home For Life Plan people aged 60+ can secure this property for up to 59% less, by purchasing a Lifetime Lease.



10735449/20240215/TE/GM