



**Guide Price**  
**£500,000**

**Freehold**

4x  2x  2x 

**Station Road, Dover,  
Kent, CT15**

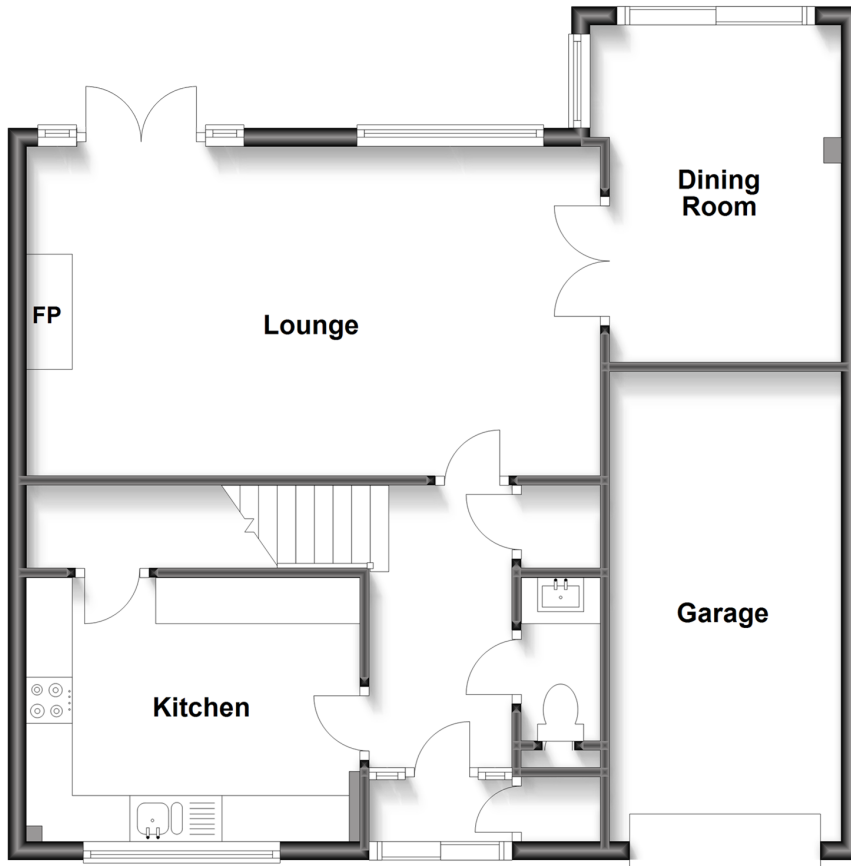
**OVER 60?**

Secure this property  
for up to **59% less!**

*Wards*  
Helping you move forwards

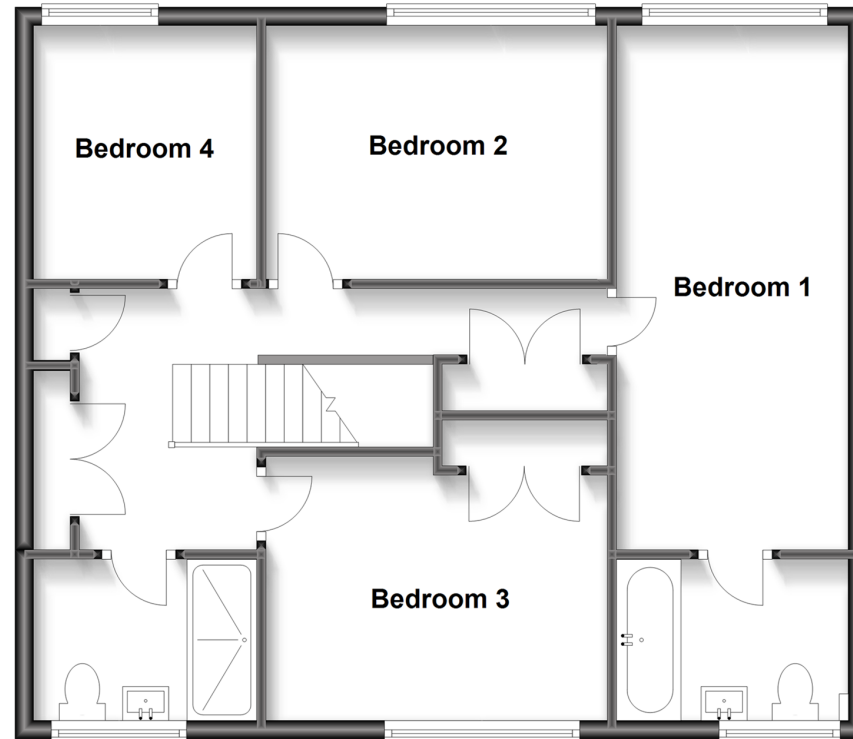
## Ground Floor

Approx. 70.5 sq. metres (758.4 sq. feet)



## First Floor

Approx. 66.9 sq. metres (719.6 sq. feet)



## Accommodation

### GROUND FLOOR

Entrance Porch  
Entrance Hallway  
Kitchen: 11'8 x 8'9 (3.56m x 2.67m)  
Utility Room  
Downstairs Cloakroom  
Lounge : 20'8 x 11'9 (6.30m x 3.58m)  
Dining Room : 12'0 x 8'2 (3.66m x 2.49m)

### FIRST FLOOR

Landing  
Bedroom 1 : 18'5 x 8'3 (5.62m x 2.52m)  
En-Suite Bathroom  
Bedroom 2 : 12'7 x 8'9 (3.84m x 2.67m)  
Bedroom 3 : 8'9 x 7'9 (2.67m x 2.36m)  
Shower Room  
Bedroom 4 : 12'2 x 9'4 (3.71m x 2.85m)

### OUTSIDE

Front Garden  
Rear Garden  
Large Shed  
Garage  
Parking For 2 Cars





## Main features

- Family house in village location of Martin Mill
- Garage and off road parking for two cars
- Surrounded by countryside
- Within walking distance of Martin Mill station with high speed link to London
- En-suite bathroom to bedroom one, ideal if a large family



### Nearest Schools

Primary Schools: Langdon Primary 0.4 miles, St Margaret's-at-Cliffe Primary 1.8 miles, Kingsdown and Ringwould CofE Primary 2.3 miles  
Secondary Schools: Learning Opportunities Centre Secondary 1.6 miles, Ripplevale School 2.0 miles.



### Transport Information

Train Stations: Martin Mill 0.1 miles, Walmer 2.7 miles, Dover Priory 3.5 miles



### Address

Station Road, Dover, Kent, CT15



### Directions

For directions to this property please contact us.





**Wards**  
Helping you move forwards

Call Dover Branch 01304 214876 ■ [wardsofkent.co.uk](https://wardsofkent.co.uk)



■ Legal advice should be taken to verify fixtures/fittings, planning, alterations and/or lease details ■ Appliances & services are untested, dimensions are approximate and floor plans are not to scale  
■ Through a Homewise Home For Life Plan people aged 60+ can secure this property for up to 59% less, by purchasing a Lifetime Lease.



10735450/20240314/GH/OV